

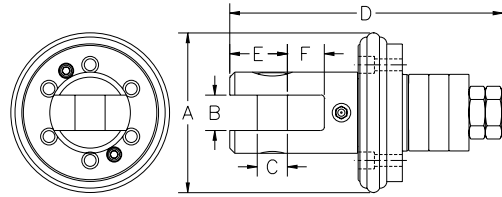
DUB-IN™

00504 SERIES

This series of built-in swivels is designed to act as a replacement for the original swivel fitted to reamers manufactured by the leading OEMs. Several OEMs offer reamers with a pocket to mount a bolt flange style swivel; others offer reamers with a female threaded pocket to mount a screw in swivel which is then secured with a hexagon collar. However, swivels are not their leading product, directional drilling machines are. DCD Design & Manufacturing is in the business of designing and building swivels and the products shown on this page all offer substantial improvements over the OEM product.

Features include:

- Multiple-stage sealing system
- Side mounted grease nipple for thorough greasing
- Hard weld surround on flange to prevent wear at the head of the securing bolts
- Angular contact bearings provide durability and excellent axial capacity. They have been maximized within the design of the reamer
- Clevis connection with high strength, hardened and replaceable clevis pins. No longer a need for shackles to complete the connection
- Completely self contained unit with jacking screws for easy removal
- Both types feature a water port with plug
- No modifications necessary to the reamer - simply use these as replacement parts



Toll Free: 1-888-SWIVELS (794-8357)
 Tel: 604-232-4445
 Fax: 604-232-4446
 E-mail: sales@dcdesign.com

Web Site: www.dcdesign.com

YouTube

Facebook

Twitter

LinkedIn

| Part No. | 3:1 Safe Working Load | Ultimate Load | To suit OEM Reamer | A | B | C | D | E | F | Flange Bolt | Weight |
|-----------|-----------------------|---------------|---|--------|---------|--------|---------|--------|--------|-------------|---------|
| 00504-D27 | 27,000 LB | 81,000 LB | DITCH WITCH® REAMERS 368-942, 369-944 | 5-7/8" | 1-1/4" | 1-1/8" | 10-1/8" | 2-1/8" | 1-3/8" | 3/8 UNC | 17.0 LB |
| 00504-V24 | 24,000 LB | 72,000 LB | ALL VERMEER® REAMERS WITH BUILT-IN SWIVELS FOR D16 - D24, | 6-1/4" | 1-5/16" | 1-1/8" | 10-1/8" | 2-1/8" | 1-3/8" | 1/2 UNC | 24.0 LB |

Ditch Witch® is a registered trade mark and is the property of The Charles Machine Works Co. Inc.
 Vermeer® is a registered trade mark and is the property of Vermeer Manufacturing Company.



DUB-Lite is a Registered Trade Mark

HDD TOOLS

