

## DCD PULLING GRIPS



DCD cable grips are hand-woven by experienced trades-people guaranteeing a consistent level of high quality. DCD grips are reverse woven, creating a loop at the end of the grip instead of being soldered or crimped together (see photo inset below of typical grip end).

The looped pulling head is actually a separate wire rope eye which is placed inside the swage sleeve along with the wire mesh strands. The swage sleeve is then crimped forming an extremely effective anchor point for both the looped head and the wire mesh. Testing proves this is never the weakest link of the product. The flexible eye allows cable to be pulled easily through smaller ducting.

The DCD cable grips enclose the cable firmly over the entire length of the mesh. They are made of high tensile steel strands. Depending on the type of grip, the strand comprises 7, 12 or 19 wires. By selecting the most suitable strand, the tension distribution characteristics can be adjusted to suit the requirements.

All DCD grips meet the highest standards in terms of material and workmanship and we are pleased to offer a wide range of grips with different designs and eye arrangements for onsite (or premise), underground or overhead installations.

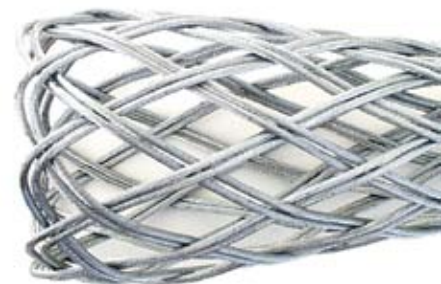
Some of the grips offered in this catalog have rotating heads which allow the grip to rotate while not under load. DCD also offers the 00501 series swivel, designed specifically for use with flexible eye grips, it is easily interchangeable but it will also not rotate under load.

All capacities indicated are approximate breaking strength. Each user must decide what safety factor they require for each specific operation before selecting which grip to use. Due to metal fatigue and possible in-use damage, quoted values only apply to new grips.

Please refer to the following pages for information on DCD's pulling grips.

Special configurations (double eyes, extra length, etc) may be available as a special factory order. Contact DCD Design with your requirements

**You Tube** - Watch our videos!

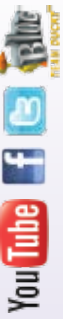


Toll Free: 1-888-SWIVELS (794-8357) Web Site: [www.dcdesign.com](http://www.dcdesign.com)

Tel: 604-232-4445

Fax: 604-232-4446

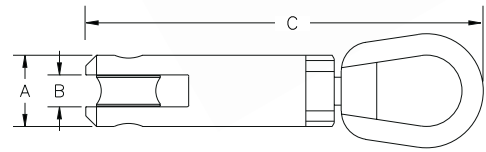
E-mail: [sales@dcdesign.com](mailto:sales@dcdesign.com)



## WIRE GRIP SWIVEL 00501 SERIES

These swivels can be used in conjunction with either the 00670 or 00680 wire mesh grips. They will allow the utility being installed to “unwind” as it is being pulled in, but like the rotary heads, these swivels will not rotate under load.

| Part No.  | Min. Breaking Strength | A      | B     | C      | Weight |
|-----------|------------------------|--------|-------|--------|--------|
| 00501-010 | 10,000 LB              | 1-1/4" | 9/16" | 7"     | 1.5 LB |
| 00501-025 | 25,000 LB              | 1-5/8" | 9/16" | 8-5/8" | 3.2 LB |



## 00661 SERIES

### SINGLE WEAVE – SINGLE EYE – LIGHT DUTY

These grips offer a flexible eye with single weave galvanized wire construction for light duty applications, pulling single or grouped cable, where a small profile is needed. A standard kit is also available in a pouch.

| Part No.   | Size Range                             | Approx. Mesh Length | Approx. Breaking Strength | Weight  |
|------------|--|---------------------|---------------------------|---------|
| 00661-004  | 0.15" to 0.24"                         | 6-1/2"              | 400 LB                    | 0.01 LB |
| 00661-006* | 0.25" to 0.37"                         | 6-1/2"              | 460 LB                    | 0.01 LB |
| 00661-010* | 0.38" to 0.49"                         | 7-1/2"              | 860 LB                    | 0.03 LB |
| 00661-013* | 0.50" to 0.62"                         | 9"                  | 1,250 LB                  | 0.06 LB |
| 00661-016* | 0.63" to 0.74"                         | 12"                 | 1,790 LB                  | 0.09 LB |
| 00661-019* | 0.75" to 0.99"                         | 12"                 | 2,580 LB                  | 0.13 LB |
| 00661-025* | 1.00" to 1.24"                         | 12.5"               | 4,090 LB                  | 0.22 LB |
| 00661-JGK  | INCLUDES ALL ABOVE PARTS MARKED WITH * |                     |                           | 0.90 LB |



00661-JGK



## 00662 / 00664 SERIES

### NON CONDUCTIVE – SINGLE / DOUBLE WEAVE – SINGLE EYE

These grips are non-metallic and non-conductive – ideal for use in damp conditions or off-shore applications. The high-strength aramid fibers are coated, lightweight and flexible: ideal for installing fiber optic cable or other high-tech cables. Smaller sizes are single weave, larger sizes are double weave.

| Part No.  | Size Range     | Weave  | Approx. Breaking Strength | Weight  |
|-----------|----------------|--------|---------------------------|---------|
| 00662-010 | 0.38" to 0.74" | SINGLE | 2,500 LB                  | 0.12 LB |
| 00662-020 | 0.75" to 1.12" | SINGLE | 3,700 LB                  | 0.18 LB |
| 00664-030 | 1.13" to 1.49" | DOUBLE | 9,800 LB                  | 0.22 LB |
| 00664-040 | 1.50" to 1.99" | DOUBLE | 11,800 LB                 | 0.46 LB |



## 00670 / 00671 SERIES

### DOUBLE WEAVE – SINGLE EYE

These grips offer a flexible eye and double weave galvanized wire construction for regular load pulls. The galvanized steel braid offers durability for underground installations and other more demanding situations.

| Part No.  | Size Range     | Approx. Mesh Length | Approx. Breaking Strength | Weight  |
|-----------|----------------|---------------------|---------------------------|---------|
| 00670-025 | 0.24" to 0.37" | 18"                 | 4,250 LB                  | 0.21 LB |
| 00670-038 | 0.38" to 0.74" | 18"                 | 5,000 LB                  | 0.34 LB |
| 00670-050 | 0.75" to 1.12" | 20"                 | 6,600 LB                  | 0.47 LB |
| 00670-100 | 1.13" to 1.49" | 21"                 | 10,000 LB                 | 0.69 LB |
| 00670-125 | 1.50" to 1.99" | 24"                 | 13,800 LB                 | 1.43 LB |
| 00670-200 | 2.00" to 2.49" | 24"                 | 14,200 LB                 | 1.47 LB |
| 00670-250 | 2.50" to 2.99" | 28"                 | 17,500 LB                 | 1.90 LB |
| 00671-080 | 3.00" to 3.74" | 30"                 | 18,000 LB                 | 2.59 LB |
| 00671-095 | 3.75" to 4.24" | 32"                 | 26,500 LB                 | 3.52 LB |



Always read Breaking Strength, safety and technical data information.  
The Approx. Mesh Length is measured at an average grip diameter.

## 00674 / 00675 SERIES

### DOUBLE WEAVE – SINGLE EYE – SLACK GRIP – CLOSED MESH

These grips offer an offset, flexible eye and durable, double-weave galvanized wire construction - for an offset pull arrangement or pulling at the mid-span of the cable. Use this style if the end is available and the grip can be mounted directly onto the cable, leaving the cable end free.

| Part No.  | Size Range     | Approx. Mesh Length | Approx. Breaking Strength | Weight  |
|-----------|----------------|---------------------|---------------------------|---------|
| 00674-010 | 0.38" to 0.74" | 14"                 | 2,500 LB                  | 0.45 LB |
| 00674-020 | 0.75" to 1.12" | 17"                 | 3,000 LB                  | 0.50 LB |
| 00674-030 | 1.13" to 1.49" | 18"                 | 5,000 LB                  | 0.75 LB |
| 00674-040 | 1.50" to 1.99" | 20"                 | 10,000 LB                 | 1.54 LB |
| 00675-050 | 2.00" to 2.49" | 20"                 | 11,000 LB                 | 1.53 LB |
| 00675-065 | 2.50" to 2.99" | 22"                 | 12,000 LB                 | 1.85 LB |
| 00675-080 | 3.00" to 3.74" | 24"                 | 15,000 LB                 | 2.02 LB |
| 00675-095 | 3.75" to 4.24" | 24"                 | 15,000 LB                 | 4.32 LB |

## 00678 / 00679 SERIES

### DOUBLE WEAVE – SINGLE EYE – SLACK GRIP – SPLIT MESH (LACE-UP)

Similar to the 00674/00675 above, these grips offer an offset eye and double weave wire - for offset or mid-span pulls. Use the laced, split-mesh grips if the end of the cable is not available or the grip cannot be mounted over the end fitting.

| Part No.  | Size Range     | Approx. Mesh Length | Approx. Breaking Strength | Weight  |
|-----------|----------------|---------------------|---------------------------|---------|
| 00678-010 | 0.38" to 0.74" | 14"                 | 4,100 LB                  | 0.40 LB |
| 00678-020 | 0.75" to 1.12" | 17"                 | 4,970 LB                  | 0.53 LB |
| 00678-030 | 1.13" to 1.49" | 18"                 | 8,150 LB                  | 0.81 LB |
| 00678-040 | 1.50" to 1.99" | 20"                 | 12,100 LB                 | 1.47 LB |
| 00679-050 | 2.00" to 2.49" | 21"                 | 16,140 LB                 | 1.74 LB |
| 00679-065 | 2.50" to 2.99" | 22"                 | 16,140 LB                 | 2.09 LB |
| 00679-080 | 3.00" to 3.74" | 24"                 | 20,170 LB                 | 2.69 LB |
| 00679-095 | 3.75" to 4.24" | 24"                 | 23,400 LB                 | 2.94 LB |

## 00680 SERIES

### DOUBLE WEAVE – SINGLE EYE – SHOULDERS

These grips offer a flexible eye with shoulders and double weave galvanized wire construction. The shoulders offer added protection to the utility being pulled in as well as protecting the leading wire strands.

| Part No.  | Size Range     | Approx. Mesh Length | Approx. Breaking Strength | Weight  |
|-----------|----------------|---------------------|---------------------------|---------|
| 00680-025 | 0.25" to 0.49" | 18"                 | 4,800 LB                  | 0.25 LB |
| 00680-038 | 0.50" to 0.74" | 18"                 | 5,800 LB                  | 0.38 LB |
| 00680-050 | 0.75" to 1.12" | 24"                 | 6,700 LB                  | 0.61 LB |
| 00680-100 | 1.13" to 1.49" | 24"                 | 10,000 LB                 | 0.87 LB |
| 00680-125 | 1.50" to 1.99" | 24"                 | 16,400 LB                 | 1.31 LB |
| 00680-200 | 2.00" to 2.49" | 24"                 | 18,500 LB                 | 1.76 LB |
| 00680-250 | 2.50" to 2.99" | 36"                 | 24,500 LB                 | 3.32 LB |
| 00680-300 | 3.00" to 3.74" | 36"                 | 24,500 LB                 | 3.33 LB |
| 00680-350 | 3.75" to 4.24" | 48"                 | 31,000 LB                 | 6.56 LB |
| 00680-400 | 4.25" to 4.99" | 48"                 | 31,000 LB                 | 7.64 LB |

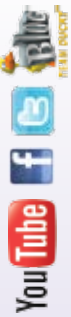


Toll Free: 1-888-SWIVELS (794-8357) Web Site: [www.dccdsgn.com](http://www.dccdsgn.com)

Tel: 604-232-4445

Fax: 604-232-4446

E-mail: [sales@dccdesign.com](mailto:sales@dccdesign.com)



PULLING & SUPPORT GRIPS

**DCD**

Always read Breaking Strength, safety and technical data information.  
The Approx. Mesh Length is measured at an average grip diameter.

## 00682 SERIES TRIPLE WEAVE – ROTARY HEAD – SHOULDERS

These grips offer a stainless steel rotary head with color-coded shoulders and triple-weave galvanized wire construction for extra strength. The shoulders help to protect the leading edge of the cable or ducting and this type should be used for heavy duty applications. The stainless steel rotary head may be fitted to a DCD Line Swivel for smooth rotation or linked to a shackle in the pulling string.

Note: The rotating head does not replace the use of a line swivel, series 00505. There are no bearings to allow rotation under load and severe damage may occur to the utility being installed if this product is used without the correct swivel. Select the appropriate swivel and safe working load based on your applied safety factors.

| Part No.  | Color Code | Size Range     | Approx. Mesh Length | A      | B      | C      | D      | Approx. Breaking Strength | Weight  |
|-----------|------------|----------------|---------------------|--------|--------|--------|--------|---------------------------|---------|
| 00682-006 | DARK GREEN | 0.25" to 0.49" | 28"                 | 7/8"   | 5/16"  | 1/2"   | 2-3/4" | 6,500 LB                  | 0.53 LB |
| 00682-012 | BROWN      | 0.50" to 0.74" | 33"                 | 1"     | 1/2"   | 9/16"  | 3-7/8" | 10,400 LB                 | 1.05 LB |
| 00682-019 | LIGHT BLUE | 0.75" to 0.99" | 41"                 | 1"     | 1/2"   | 9/16"  | 3-7/8" | 16,000 LB                 | 1.54 LB |
| 00682-025 | GOLD       | 1.00" to 1.24" | 51"                 | 1-3/8" | 1/2"   | 11/16" | 5-3/8" | 25,400 LB                 | 3.85 LB |
| 00682-032 | BLACK      | 1.25" to 1.49" | 60"                 | 1-5/8" | 9/16"  | 7/8"   | 6-1/8" | 31,700 LB                 | 5.27 LB |
| 00682-038 | RED        | 1.50" to 1.99" | 75"                 | 1-7/8" | 21/32" | 1"     | 7-3/8" | 32,000 LB                 | 7.19 LB |
| 00682-048 | YELLOW     | 2.00" to 2.49" | 75"                 | 1-7/8" | 21/32" | 1"     | 7-3/8" | 44,600 LB                 | 9.51 LB |



## 00690 SERIES DOUBLE WEAVE – ROTARY HEAD – SHOULDERS

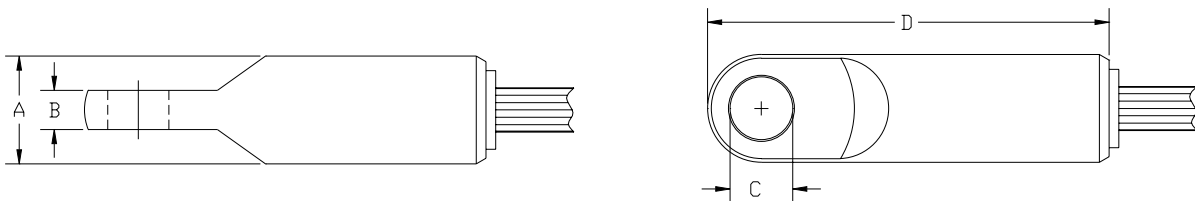
These grips offer a stainless steel rotary head with color-coded shoulders and double-weave galvanized wire construction for durability. The shoulders help to protect the leading edge of the cable or ducting and this type should be used for medium to heavy duty applications. The stainless steel rotary head may be fitted to a DCD Line Swivel for smooth rotation or linked to a shackle in the pulling string.

Note: The rotating head does not replace the use of a line swivel, series 00505. There are no bearings to allow rotation under load and severe damage may occur to the utility being installed if this product is used without the correct swivel. Select the appropriate swivel and safe working load based on your applied safety factors.

| Part No.  | Size Range     | Approx. Mesh Length | A      | B      | C      | D      | Approx. Breaking Strength | Weight   |
|-----------|----------------|---------------------|--------|--------|--------|--------|---------------------------|----------|
| 00690-038 | 0.50" to 0.74" | 16"                 | 7/8"   | 5/16"  | 1/2"   | 2-3/4" | 5,800 LB                  | 0.49 LB  |
| 00690-050 | 0.75" to 1.12" | 24"                 | 7/8"   | 5/16"  | 1/2"   | 2-3/4" | 6,700 LB                  | 0.72 LB  |
| 00690-100 | 1.13" to 1.49" | 33"                 | 1-3/8" | 1/2"   | 11/16" | 5-3/8" | 13,000 LB                 | 2.31 LB  |
| 00690-125 | 1.50" to 1.99" | 36"                 | 1-3/8" | 1/2"   | 11/16" | 5-3/8" | 16,500 LB                 | 3.00 LB  |
| 00690-200 | 2.00" to 2.49" | 36"                 | 1-5/8" | 9/16"  | 7/8"   | 6-1/8" | 21,000 LB                 | 4.27 LB  |
| 00690-250 | 2.50" to 2.99" | 38"                 | 1-7/8" | 21/32" | 1"     | 7-3/8" | 33,000 LB                 | 7.03 LB  |
| 00690-300 | 3.00" to 3.74" | 39"                 | 1-7/8" | 21/32" | 1"     | 7-3/8" | 41,000 LB                 | 7.29 LB  |
| 00690-350 | 3.75" to 4.24" | 42"                 | 1-7/8" | 21/32" | 1"     | 7-3/8" | 48,000 LB                 | 8.55 LB  |
| 00690-400 | 4.25" to 4.99" | 58"                 | 1-7/8" | 21/32" | 1"     | 7-3/8" | 48,000 LB                 | 10.88 LB |



### Rotary Head Dimensions



Always read Breaking Strength, safety and technical data information.  
The Approx. Mesh Length is measured at an average grip diameter.

## 00681 SERIES TRIPLE WEAVE – SINGLE EYE – SHOULDERS

These grips offer a color-coded, flexible eye with shoulders and triple weave galvanized wire construction. The shoulders help to protect the leading edge of the cable or ducting and this type should be used for more demanding, heavy duty applications.

| Part No.  | Color Code | Size Range     | Approx. Mesh Length | Approx. Breaking Strength | Weight  |
|-----------|------------|----------------|---------------------|---------------------------|---------|
| 00681-006 | DARK GREEN | 0.25" to 0.49" | 28"                 | 6,500 LB                  | 0.41 LB |
| 00681-012 | BROWN      | 0.50" to 0.74" | 33"                 | 10,400 LB                 | 0.79 LB |
| 00681-019 | LIGHT BLUE | 0.75" to 0.99" | 41"                 | 16,000 LB                 | 1.47 LB |
| 00681-025 | GOLD       | 1.00" to 1.24" | 51"                 | 25,400 LB                 | 3.46 LB |
| 00681-032 | BLACK      | 1.25" to 1.49" | 60"                 | 31,700 LB                 | 4.11 LB |
| 00681-038 | RED        | 1.50" to 1.99" | 75"                 | 32,000 LB                 | 4.81 LB |
| 00681-048 | YELLOW     | 2.00" to 2.49" | 75"                 | 44,600 LB                 | 8.12 LB |



## 00695 SERIES DUAL WIRE – DOUBLE WEAVE – HIGH STRENGTH – SHOULDERS

These extra high strength grips feature a dual wire, double woven construction. This type of grip should be used for heavy duty applications such as overhead transmission wire. The color-coded grips are particularly suited to bare conductor and synthetic rope applications.

When pulling rope of any kind, it may be difficult to feed the leading end of the rope into the grip and we recommend use of the feed tube shown below.

| Part No.  | Color Code | Conductor Size Range | Rope Size Range | Approx. Mesh Length | Head Length | Approx. Breaking Strength | Weight   |
|-----------|------------|----------------------|-----------------|---------------------|-------------|---------------------------|----------|
| 00695-019 | BLACK      | 0.19" to 0.37"       | 0.25" to 0.65"  | 24"                 | 10"         | 6,800 LB                  | 0.61 LB  |
| 00695-038 | DARK GREEN | 0.38" to 0.62"       | 0.50" to 0.90"  | 36"                 | 12"         | 14,500 LB                 | 1.56 LB  |
| 00695-063 | RED        | 0.63" to 0.87"       | 0.75" to 1.10"  | 48"                 | 13"         | 21,500 LB                 | 2.53 LB  |
| 00695-088 | DARK BLUE  | 0.88" to 1.12"       | 1.00" to 1.50"  | 60"                 | 15"         | 32,000 LB                 | 6.14 LB  |
| 00695-113 | YELLOW     | 1.13" to 1.37"       | 1.25" to 1.70"  | 76"                 | 18"         | 48,000 LB                 | 13.06 LB |
| 00695-138 | ALUMINUM   | 1.38" to 1.90"       | 1.50" to 2.10"  | 89"                 | 24"         | 68,000 LB                 | 19.87 LB |



## 00696 SERIES FEED TUBE FOR 00695 SERIES

When pulling rope, this feed tube can be used to help feed the leading end of the rope into the grip.

| Part No.  | Rope Size Range | Tube Length | Weight  |
|-----------|-----------------|-------------|---------|
| 00696-019 | 0.25" to 0.65"  | 28"         | 0.94 LB |
| 00696-038 | 0.50" to 0.90"  | 40"         | 2.32 LB |
| 00696-063 | 0.75" to 1.10"  | 52"         | 2.71 LB |
| 00696-088 | 1.00" to 1.50"  | 67"         | 5.65 LB |
| 00696-113 | 1.25" to 1.70"  | 83"         | 9.2 LB  |
| 00696-138 | 1.50" to 2.10"  | 96"         | 9.2 LB  |



## 00697 SERIES DOUBLE WEAVE - OPEN ENDS

These grips are open both ends to butt rope or cable ends together, (ex. for elevator or crane rope replacement), and have a double weave galvanized wire construction. The old cable may be attached to the new one and simply pulled through the blocks.

| Part No.  | Rope Size Range | Tube Length | Weight  |
|-----------|-----------------|-------------|---------|
| 00697-010 | 0.38" to 0.74"  | 60"         | 0.58 LB |
| 00697-020 | 0.75" to 1.12"  | 60"         | 0.83 LB |



Always read Breaking Strength, safety and technical data information.  
The Approx. Mesh Length is measured at an average grip diameter.

Web Site: [www.dccdsgn.com](http://www.dccdsgn.com)



Toll Free: 1-888-SWIVELS (794-8357)

Tel: 604-232-4445

Fax: 604-232-4446

E-mail: [sales@dccdesign.com](mailto:sales@dccdesign.com)