

## DUB-IN™ 00503 / 00504 series

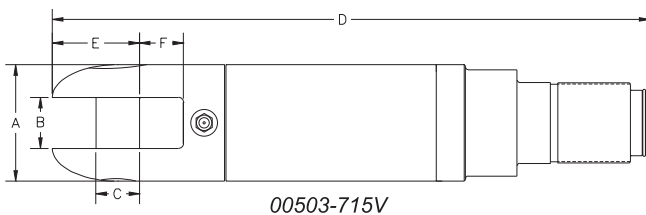
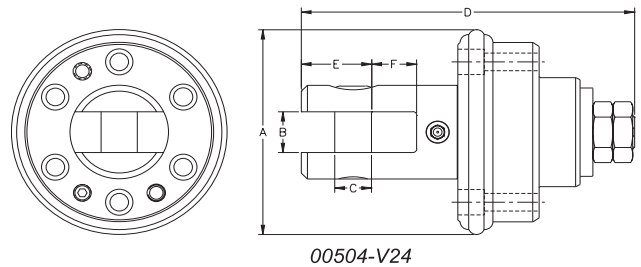
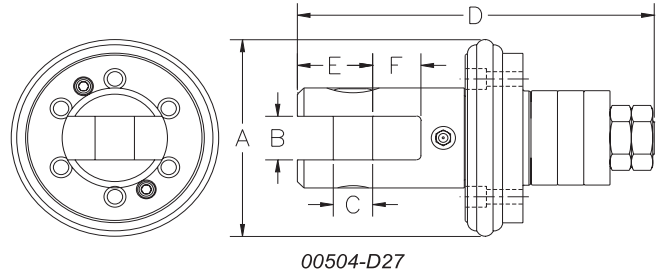
This series of built-in Swivels is designed to act as a replacement for the original swivel fitted to reamers manufactured by the leading OEMs.

Several OEMs offer reamers with a pocket to mount a bolt flange style swivel, others offer reamers with a female threaded pocket to mount a screw in swivel which is then secured with a hexagon collar. However, swivels are not their leading product, Directional Drilling machines are.

DCD Design & Manufacturing is in the business of designing and building swivels and the products shown on this page all offer substantial improvements over the OEM product.

Features include:

- Multiple stage sealing system,
- Side mounted Grease Nipple for through greasing,
- Hard weld surround on flange to prevent wear at the head of the securing bolts.
- Angular contact bearings provide durability and excellent axial capacity. They have been maximized within the design of the reamer,
- All parts surrounding the bearings are designed with a 3:1 safety factor,
- Clevis connection with high strength, hardened and replaceable Clevis Pin. No longer a need for shackles to complete the connection!
- Completely self contained unit with jacking screws for easy removal.
- Both types feature a water port with plug.
- No modifications necessary to the reamer  
- simply use these as replacement parts.



Part No.	*Safe Working Limit	Ultimate Load	To suit OEM Reamer	A	B	C	D	E	F	Flange Bolt	Weight
00504-D27	27,000 lb.	81,000 lb.	Ditch Witch® Reamers 368-942, 369-944	5-7/8"	1-1/4"	1-1/8"	10-1/8"	2-1/8"	1-3/8"	3/8 UNC	28 lb.
00504-V24	24,000 lb.	72,000 lb.	All Vermeer® Reamers with built-in swivels for D16 thru' D24, 8" dia. thru' 16" dia.	6-1/4"	1-5/16"	1-1/8"	10-1/8"	2-1/8"	1-3/8"	1/2 UNC	25 lb.
00503-715V	30,000 lb.	90,000 lb.	All Vermeer® Reamers with hex collar attachments for swivels for D16 thru' D40	3"	1-3/8"	1-1/8"	15-3/8"	2-1/4"	1-1/8"	N/A	21 lb.

Ditch Witch® is a registered trade mark and is the property of The Charles Machine Works Co. Inc.

Vermeer® is a registered trade mark and is the property of Vermeer Manufacturing Company.

\*Safety factor of 3:1