

## LINE SWIVEL 00505/00505A series

DCD Line Swivels are typically constructed with a thrust bearing for tensile load and a radial bearing for bending load. They combine a high safe working load with a compact design. All sizes incorporate an oil seal and are manufactured from high strength Stainless Steel.

DCD has recently added Locking Line Swivels to their product line. These are typically constructed with a Bronze thrust bearing for tensile load and a radial bearing for bending load. They combine a high safe working load with a compact design. Due to the use of a Bronze bearing in place of a Roller bearing, rotation will only continue up to a certain load, much less than the Safe Working Load. Once past this point, then rotation will only occur when pulling tension is relieved.

Sizes 00505-020 and larger are supplied with a grease point for lubrication. This is particularly useful in overhead applications where high speed rotation is possible.

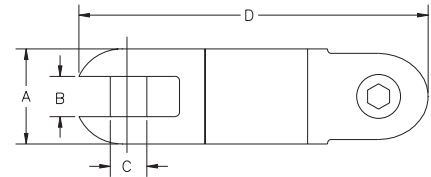
All sizes of both types are pull tested to verify the 3:1 safety factor and all (swiveling) sizes are fully capable of rotation at full working load. Test certificates are available upon request.

Sizes 00505-025 and larger are supplied with hexagon Clevis Pins. Smaller sizes have slotted Clevis Pins.

For clevis detail and pin replacement see catalog sheet series 00000.

Under no circumstances should alternate Clevis Pins be used.

**Note:** Line swivels are not designed to run around bull wheels and severe damage or injury may be incurred if this is done.



Part No. Swiveling	Part No. Non-Swiveling	*Underground Safe Working Load	**Overhead Safe Working Load	A	B	C	D	Weight	Standard Clevis Pins
00505-005	—	750 lb.	450 lb.	5/8"	9/32"	3/16"	2-1/2"	0.13 lb.	00005-SLT
00505-010	00505-010A	2,250 lb.	1,350 lb.	7/8"	3/8"	5/16"	3-3/8"	0.34 lb.	00010-SLT
00505-015	00505-015A	3,500 lb.	2,100 lb.	1"	13/32"	3/8"	3-7/8"	0.50 lb.	00015-SLT
00505-020	00505-020A	5,000 lb.	3,000 lb.	1-1/4"	17/32"	13/32"	4-3/4"	1.00 lb.	00020-SLT
00505-025	00505-025A	7,000 lb.	4,200 lb.	1-3/8"	9/16"	1/2"	5-1/8"	1.40 lb.	00025-HEX
00505-027	00505-027A	9,000 lb.	5,400 lb.	1-1/2"	19/32"	1/2"	5-5/8"	1.70 lb.	00025-HEX
00505-030	00505-030A	10,000 lb.	6,000 lb.	1-5/8"	11/16"	5/8"	6"	2.10 lb.	00030-HEX
00505-035	00505-035A	15,000 lb.	9,000 lb.	2"	25/32"	11/16"	7"	3.80 lb.	00035-HEX
00505-040	—	25,000 lb.	15,000 lb.	2-3/8"	1-1/32"	7/8"	10-5/16"	7.60 lb.	00040-HEX
00505-041†	—	30,000 lb.	18,000 lb.	2-3/8"	1-1/32"	7/8"	10-5/16"	7.60 lb.	00040-HEX
00505-045†	—	50,000 lb.	30,000 lb.	3"	1-3/16"	1-1/8"	13-3/4"	17.00 lb.	00045-HEX
00505-050†	—	62,500 lb.	37,500 lb.	3-3/4"	1-1/2"	1-1/4"	15-9/16"	34.00 lb.	00050-HEX

†These swivels are made from Alloy Steel with a black oxide finish, all others are Stainless Steel.

\*Safety factor is 3:1

\*\*Safety factor is 5:1



Web Site: [www.dcdesign.com](http://www.dcdesign.com)  
E-mail: [sales@dcdesign.com](mailto:sales@dcdesign.com)  
1-888-SWIVELS (794-8357)  
604-232-4445  
604-232-4446  
Toll Free:  
Tel:  
Fax:

SWIVELS & CONNECTORS

DCD