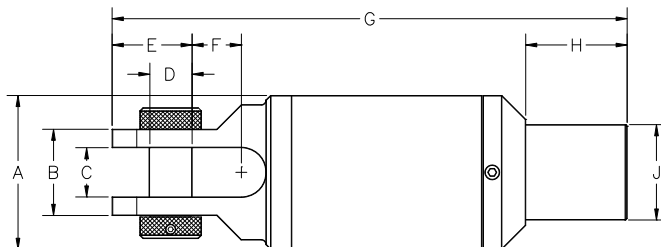


# MAXI DUB-Swivel®

## Type 1 - API Box / Clevis for MAXI Rigs

The load range of Maxi-Rig swivels is designed to fit the capacities of the most common rig manufacturers. Other thread configurations may be available as a special order.

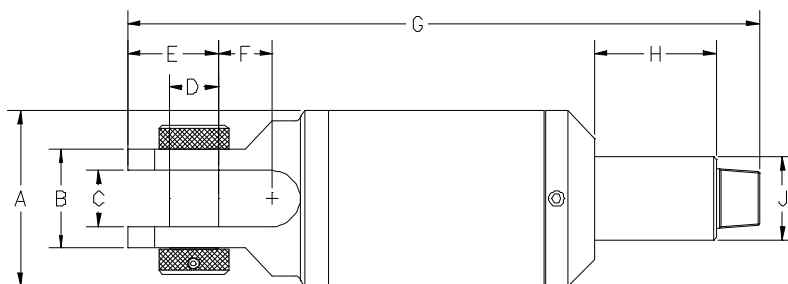
This series of swivels is designed with service in mind. The Seal Cover is removable and all seals can be replaced in the field without need for major disassembly. DCD has a factory authorized facility for complete assessments and repairs, as a part of a preventative maintenance program that will keep the swivel operating longer.



Part Number	Safe Working Limit	Ultimate Load	Box Thread	A	B	C	D	E	F	G	H	J	Net Weight
00508-1110	110 TON 100 TONNE	400 TON 360 TONNE	4-1/2 IF API	10-3/4" 273mm	6" 152mm	3-1/4" 83mm	2-1/2" 64mm	4-3/4" 121mm	2-7/8" 72mm	35" 889mm	7-7/16" 189mm	6-5/8" 169mm	420 lb 190 kg
00508-1165	165 TON 150 TONNE	600 TON 540 TONNE	4-1/2 IF API	10-3/4" 273mm	6-1/2" 165mm	3-1/2" 89mm	3" 76mm	5-1/2" 140mm	3" 76mm	38" 965mm	7-7/16" 190mm	6-5/8" 169mm	580 lb 260 kg
00508-1220	220 TON 200 TONNE	750 TON 680 TONNE	6-5/8 REG API	12-1/2" 318mm	7" 178mm	4" 102mm	3-1/2" 89mm	6-1/2" 165mm	4" 102mm	41-7/8" 1064mm	8-1/4" 209mm	7-3/4" 196mm	860 lb 390 kg
00508-1350	350 TON 320 TONNE	1250 TON 1130 TONNE	7-5/8 REG API	16" 406mm	9" 229mm	5" 127mm	4-1/2" 114mm	8-1/2" 216mm	4-1/2" 114mm	50-11/16" 1287mm	9-1/4" 234mm	9-1/4" 235mm	1,690 lb 770 kg
00508-1351	350 TON 320 TONNE	1250 TON 1130 TONNE	6-5/8 FH API	16" 406mm	9" 229mm	5" 127mm	4-1/2" 114mm	8-1/2" 216mm	4-1/2" 114mm	50-11/16" 1287mm	8-7/8" 225mm	8-1/2" 216mm	1,690 lb 770 kg
00508-1500	500 TON 450 TONNE	1750 TON 1580 TONNE	7-5/8 REG API	19-1/2" 495mm	10-1/2" 267mm	5-1/2" 140mm	5-1/2" 140mm	9-3/4" 248mm	5-1/4" 133mm	55-9/16" 1411mm	9-1/4" 234mm	9-1/4" 235mm	2,700 lb 1,230 kg
00508-1700	700 TON 640 TONNE	2500 TON 2270 TONNE	7-5/8 REG API	23" 584mm	12-1/2" 318mm	6-1/2" 165mm	6-1/2" 165mm	11-1/2" 292mm	5-1/2" 140mm	65-7/16" 1663mm	9-1/2" 241mm	9-1/4" 235mm	4,120 lb 1,880 kg

# MAXI DUB-Swivel®

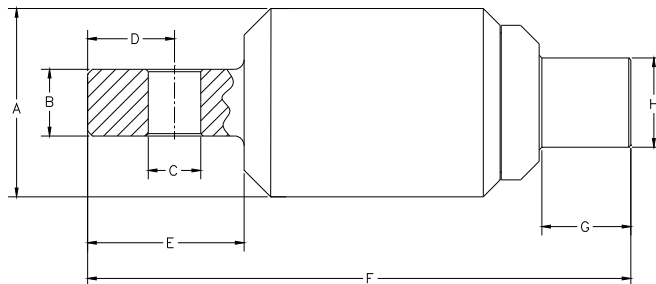
## Type 7 - API Pin / Clevis for MAXI Rigs



Part Number	Safe Working Limit	Ultimate Load	Pin Thread	A	B	C	D	E	F	G	H	J	Net Weight
00508-7500	500 TON 450 TONNE	1750 TON 1580 TONNE	6-5/8 FH API	19-1/2" 495mm	10-1/2" 267mm	5-1/2" 140mm	5-1/2" 140mm	9-3/4" 248mm	5-1/4" 133mm	64-3/4" 1645mm	12-1/8" 308mm	9-1/4" 235mm	2,700 lb 1,230 kg
00508-7700	700 TON 640 TONNE	2500 TON 2270 TONNE	6-5/8 FH API	23" 584mm	12-1/2" 318mm	6-1/2" 165mm	6-1/2" 165mm	11-1/2" 292mm	5-1/2" 140mm	72-11/16" 1847mm	12-1/8" 308mm	9-1/4" 235mm	4,120 lb 1,880 kg

# MAXI DUB-Swivel®

## Type 8 - API Box / Lug for MAXI Rigs



Part Number	Safe Working Limit	Ultimate Load	Pin Thread	A	B	C	D	E	F	G	H	Net Weight
00508-8500	500 TON	1750 TON	7-5/8	19-1/2"	5-3/4"	5-1/2"	9"	17-7/16"	57-9/16"	9-1/2"	9-1/4"	2,700 lb
	450 TONNE	1580 TONNE	REG API	495mm	146mm	140mm	229mm	444mm	1461mm	241mm	235mm	1,230 kg
00508-8501	500 TON	1750 TON	7-5/8	19-1/2"	6-7/8"	5-7/16"	9"	16-3/16"	56-5/16"	9-1/4"	9-1/4"	2,700 lb
	450 TONNE	1580 TONNE	REG API	495mm	175mm	138mm	229mm	412mm	1430m	234mm	235mm	1,230 kg

## General information

These Pullback Swivels are designed specifically for Horizontal Directional Drilling applications.

The most important feature of this patented product is the sealing system. The multiple sealing stages become progressively finer so that a simple oil seal is not required to keep out sand and other coarse particles which can easily destroy such a seal. DCD starts with a gap seal that keeps out the larger particles, then a mechanical seal with lapped steel rings rotating against each other. This seal is designed for use in such applications as cement mixers or military tanks used in desert conditions. For the final stage of protection, a lip seal is used directly in front of the bearings. In addition to the sealing system, these swivels offer a lubrication system complete with relief valve so that the seals cannot be damaged by over greasing. Grease need only be applied in small quantities since loss of lubricant is almost non-existent.

MAXI DUB-Swivels utilize a proven Spherical Roller, Cylindrical Roller and Tapered Roller Bearing combination. The tension load carrying Spherical Roller Bearing does not offer adequate side load protection and therefore the use of the Cylindrical Roller Bearing for extra support is added.

The DUB-Swivel bearings are designed to provide a life span in excess of 700 hours. This life span is based on proper usage of the swivel – severe side or shock loads as well as maintenance and care will affect these expectations. Close attention must be paid to the product information sheets that accompany each swivel shipped.

All mechanical components are designed to withstand a tensile load of 3-1/2 times the Safe Working Limit typically.

All MAXI DUB-Swivels are built with individually assigned serial numbers and complete material traceability for every component.