

DUB-Swivel® 00508 series

General information.

These Pullback Swivels are designed specifically for Horizontal Directional Drilling applications.

The most important feature of this patented product is the sealing system. The multiple sealing stages become progressively finer so that a simple oil seal is not required to keep out sand and other coarse particles which can easily destroy such a seal. DCD starts with a gap seal that keeps out the larger particles, then they utilize a mechanical seal with lapped steel rings rotating against each other. This seal is designed for use in such applications as cement mixers or military tanks used in desert conditions. For the final stage of protection, a lip seal is used directly in front of the bearings.

In addition to the sealing system, these swivels offer a lubrication system complete with relief valve so that the seals cannot be damaged by over greasing. Grease need only be applied in small quantities since loss of lubricant is almost non-existent.

DUB-Swivels use back to back Tapered Roller Bearings in the smaller sizes up to and including 20 Ton capacity. Larger sizes utilize a Spherical Roller, Cylindrical Roller and Tapered Roller Bearing combination. The tension load carrying Spherical Roller Bearing does not offer adequate side load protection and therefore the use of the Cylindrical Roller Bearing for extra support is added.

The DUB-Swivel bearings are designed to provide a lifespan in excess of 700 hours. This lifespan is based on proper usage of the swivel – severe side or shock loads as well as maintenance and care will affect these expectations. Close attention must be paid to the product information sheets that accompany each swivel shipped.

It is our recommendation always to select a swivel larger than the machine capacity. It is usually more cost effective when this is done and, if the product is used carefully, lifespans in excess of 3,000 hours have been recorded.

All mechanical components are designed to withstand a straight tensile load of 5 times the Safe Working Limit on the smaller swivels while swivels over 100 Ton capacity have a lesser rating depending on size.

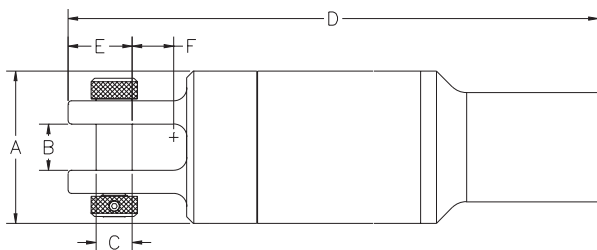
All DUB-Swivels 20 Ton capacity and larger are built with individually assigned serial numbers and complete material traceability for every component.

The above features apply to all types of DUB-Swivels.

DUB-Swivel®

Type 1 - API Box / Clevis

Type 1 swivels offer an API box connection at the leading end and a Clevis connection at the trailing end. The rigid connection allows more straight forward pushback, but it also places a more severe side loading on the swivel.



Part No.	*Safe Working Limit	Ultimate Load	Box Thread	A	B	C	D	E	F	Weight
00508-115C	30,000 lb.	150,000 lb.	2-3/8" IF API	4-3/4"	1-3/4"	1-1/8"	19-1/8"	2-1/16"	1-7/16"	96 lb.
00508-120C	40,000 lb.	200,000 lb.	2-3/8" IF API	5-3/4"	1-3/4"	1-3/8"	19-3/8"	2-1/2"	1-7/16"	96 lb.
00508-120D	40,000 lb.	200,000 lb.	2-7/8" IF API	5-3/4"	1-3/4"	1-3/8"	19-1/2"	2-1/2"	1-7/16"	96 lb.
00508-130D	60,000 lb.	300,000 lb.	2-7/8" IF API	6"	1-3/4"	1-3/8"	19-1/2"	2-1/2"	1-7/16"	96 lb.
00508-130E	60,000 lb.	300,000 lb.	3-1/2" IF API	6"	1-3/4"	1-3/8"	20"	2-1/2"	1-7/16"	96 lb.
00508-140E	80,000 lb.	400,000 lb.	3-1/2" IF API	6-1/2"	2-1/8"	1-3/4"	24-7/8"	3-5/16"	1-7/8"	180 lb.
00508-140F	80,000 lb.	400,000 lb.	4-1/2" IF API	6-1/2"	2-1/8"	1-3/4"	26"	3-5/16"	1-7/8"	180 lb.
00508-160F	120,000 lb.	600,000 lb.	4-1/2" IF API	7-1/2"	2-3/4"	2-1/8"	30"	3-5/8"	2-5/8"	250 lb.
00508-180F	160,000 lb.	800,000 lb.	4-1/2" IF API	9"	3-1/4"	2-1/2"	32-5/8"	4-13/16"	2-3/4"	390 lb.

*Safety factor of 5:1

US Patent # 5,529,421
Canadian Patent # 2,109,041
DUB-Swivel is a registered Trade Mark

Web Site: www.dcdesign.com
E-mail: sales@dcddesign.com

Toll Free: 1-888-SWIVELS (794-8357)
Tel: 604-232-4445
Fax: 604-232-4446

PULLBACK SWIVELS

DCD