

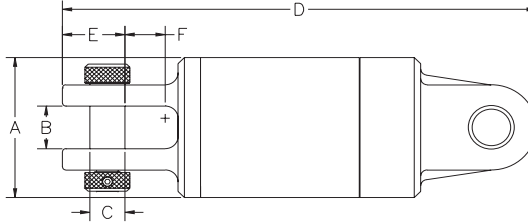
DUB-Swivel®

Type 2 Clevis / Clevis

Type 2 swivels offer a Clevis connection at both ends with hardened, lockable Clevis Pins.

This style of swivel is the most common type and is the best for distributing side loads applied on the swivel due to its ability to pivot at either end. On the other hand, it does not allow the operator to push back without proper care and attention or the swivel may fold back on itself. When rotation is re-commenced, the line must be pulled straight or damage may occur to the clevis ends.

The Clevis Pins are available as spare parts and must never be replaced with any type of pin not manufactured by DCD Design.



Part No.	Limit	Ultimate Load	A	B	C	D	E	F	Weight	Clevis Pin Kit
00508-202	5,000 lb.	25,000 lb.	2"	1"	11/16"	7-1/2"	1-3/16"	13/16"	3.8 lb.	00508-002
00508-205	10,000 lb.	50,000 lb.	3-1/8"	1-1/4"	3/4"	11-1/2"	1-5/16"	7/8"	15.0 lb.	00508-005
00508-210	20,000 lb.	100,000 lb.	3-3/4"	1-1/2"	1"	13-5/8"	1-5/8"	15/16"	27.0 lb.	00508-010
00508-215	30,000 lb.	150,000 lb.	4-3/4"	1-3/4"	1-1/8"	18"	2-1/16"	1-7/16"	57.0 lb.	00508-015
00508-220	40,000 lb.	200,000 lb.	5-3/4"	1-3/4"	1-3/8"	18-1/2"	2-1/2"	1-7/16"	83.0 lb.	00508-020
00508-230	60,000 lb.	300,000 lb.	6"	1-3/4"	1-3/8"	18-1/2"	2-1/2"	1-7/16"	85.0 lb.	00508-020
00508-240	80,000 lb.	400,000 lb.	6-1/2"	2-1/8"	1-3/4"	24-1/2"	3-5/16"	1-7/8"	150.0 lb.	00508-040
00508-260	120,000 lb.	600,000 lb.	7-1/2"	2-3/4"	2-1/8"	29"	3-5/8"	2-5/8"	250.0 lb.	00508-060
00508-280	160,000 lb.	800,000 lb.	9"	3-1/4"	2-1/2"	33-1/2"	4-13/16"	2-3/4"	380.0 lb.	00508-080

*Safety factor is 5:1

Toll Free: 1-888-SWIVELS (794-8357)
 Tel: 604-232-4445
 Fax: 604-232-4446

PULLBACK SWIVELS



US Patent # 5,529,421
 Canadian Patent # 2,109,041
 DUB-Swivel is a registered Trade Mark

Web Site: www.dcdesign.com
 E-mail: sales@dcdesign.com