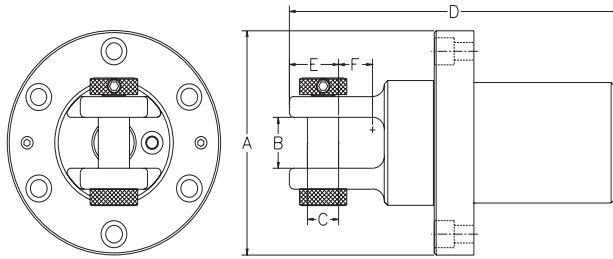


Stub-e-DUB™

Type 6 Built-in / Clevis

Type 6 swivels are especially designed to fit inside custom built reamers. There are several manufacturers making these special reamers. They have a mounting flange allowing assembly into the reamer and thereby reducing the gap back to the utility being installed. The flange has jacking screws as well as a plugged water port. These swivels are totally self contained and greaseable, please apply to Customer Service for mounting specifications.



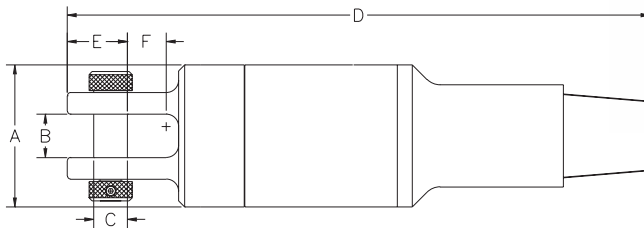
Part No.	*Safe Working Limit	Ultimate Load	A	B	C	D	E	F	Flange Bolts	Weight
00508-605	10,000 lb.	50,000 lb.	5"	1-1/4"	2-3/4"	8-1/2"	1-5/16"	7/8"	6 x 3/8 UNC	3.8 lb.
00508-610	20,000 lb.	100,000 lb.	6-1/8"	1-1/2"	1"	10-1/2"	1-5/8"	15/16"	6 x 1/2 UNC	15.0 lb.
00508-615	30,000 lb.	150,000 lb.	7-1/4"	1-3/4"	1-1/8"	13-3/8"	2-1/16"	1-7/16"	6 x 5/8 UNC	27.0 lb.
00508-620	40,000 lb.	200,000 lb.	9-1/2"	1-3/4"	1-3/8"	14-1/4"	2-1/2"	1-7/16"	8 x 3/4 UNC	57.0 lb.
00508-630	60,000 lb.	300,000 lb.	9-1/2"	1-3/4"	1-3/8"	14-1/4"	2-1/2"	1-7/16"	8 x 3/4 UNC	83.0 lb.
00508-640	80,000 lb.	400,000 lb.	9-1/2"	2-1/8"	1-3/4"	18-1/8"	3-5/16"	1-7/8"	8 x 3/4 UNC	85.0 lb.

*Safety factor of 5:1

DUB-Swivel®

Type 7 Clevis / Pin

Type 7 swivels offer a Pin connection to the reamer or hole opener ahead of the swivel. There are several different types and sizes of threaded connections, see the charts for details. The rigid connection allows more straightforward pushback, but it also places a more severe side loading on the swivel.



Part No.	*Safe Working Limit	Ultimate Load	Pin Thread	A	B	C	D	E	F	Weight
00508-710V	20,000 lb.	100,000 lb.	2.06 - Starter Rod	3-3/4"	1-1/2"	1"	16-1/4"	1-5/8"	15/16"	28 lb.
00508-715V	30,000 lb.	150,000 lb.	2.06 - Starter Rod	4-3/4"	1-3/4"	1-1/8"	19-3/4"	2-1/16"	1-7/16"	59 lb.
00508-730D	60,000 lb.	300,000 lb.	2-7/8 IF API	6"	1-3/4"	1-3/8"	23-1/4"	2-1/2"	1-7/16"	96 lb.

*Safety factor of 5:1

Web Site: www.dcdesign.com
E-mail: sales@dcdesign.com

Toll Free: 1-888-SWIVELS (794-8357)
Tel: 604-232-4445
Fax: 604-232-4446

PULLBACK SWIVELS

US Patent # 5,529,421A
Canadian Patent # 2,109,041A
DUB-Swivel is a registered Trade Mark

DCD