

DUCT PULLERS

00604 / 00605 / 00615 series

These products are designed to install polyethylene ducting using a screw-in tapered thread to grip the inside diameter of the duct.

The pullers are typically used to install innerduct inside a larger duct. However, the 00604 and 00605 series may also be used for Directional Drilling applications and because there are no moving parts, they are reliable and maintenance free.

All of these pulling eyes are designed with cutting edges to actually cut a thread in the bore of the ducting as it is being screwed in, much the same way as using a tap to cut a thread in steel. This helps to ensure a reliable grip. Installation typically requires only 7 or 8 full threads of contact to give a grip stronger than the ducting itself.

The Duct Pullers are installed quickly and easily and require no special tooling. They are manufactured out of steel and chrome plated for durability.



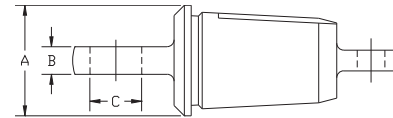
Web Site: www.dcdcdesign.com
E-mail: sales@dcdcdesign.com

00604 DUCT PULLER – LUG

The Lug Type, Series 00604, are recommended when attaching directly to a line swivel or other clevis type connector.

Lug Type Part No.	Nominal Duct Dia.	Min. Duct Inside Dia.	Max. Duct Inside Dia.	A	B	C	Weight
00604-075	3/4"	0.72"	0.93"	1-1/8"	11/32"	17/32"	0.51 lb.
00604-100	1"	0.94"	1.15"	1-3/8"	11/32"	21/32"	0.79 lb.
00604-113*	1-1/4"	1.15"	1.34"	1-1/2"	11/32"	21/32"	1.16 lb.
00604-125	1-1/4"	1.26"	1.44"	1-3/4"	11/32"	21/32"	1.40 lb.
00604-150	1-1/2"	1.48"	1.66"	2"	1/2"	15/16"	2.03 lb.
00604-175	1-3/4"	1.66"	1.81"	2-1/4"	1/2"	15/16"	2.47 lb.
00604-200	2"	1.91"	2.08"	2-1/2"	1/2"	15/16"	3.20 lb.
00604-010	Driving Tool for Lug Type Pullers (with 1/2" square drive)						1.45 lb.

* Telecom

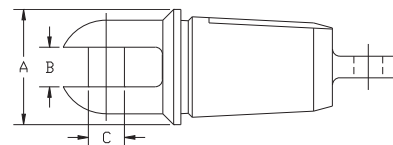


Toll Free: 1-888-SWIVELS (794-8357)
Tel: 604-232-4445
Fax: 604-232-4446

00605 DUCT PULLER – CLEVIS

The Clevis Type Series 00605 are better if attaching to a pulling rope or wire with an eye that can be slotted into the clevis and simply attached with the pin provided.

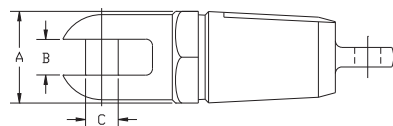
Clevis Type Part No.	Nominal Duct Dia.	Min. Duct Inside Dia.	Max. Duct Inside Dia.	A	B	C	Weight
00605-100	1"	0.94"	1.15"	1-3/8"	17/32"	13/32"	0.90 lb.
00605-125	1-1/4"	1.26"	1.44"	1-3/4"	17/32"	13/32"	1.48 lb.
00605-150	1-1/2"	1.48"	1.66"	2"	11/16"	5/8"	2.20 lb.
00605-200	2"	1.91"	2.08"	2-1/2"	11/16"	5/8"	3.35 lb.



00615 DUCT PULLER – SWIVEL CLEVIS

These products are similar to the 00604 and 00605 series, but incorporate a built-in swivel head. They should only be used to install innerduct and are not suitable for use in any kind of Directional Drilling application.

Part No.	Nominal Duct Dia.	Min. Duct Inside Dia.	Max. Duct Inside Dia.	A	B	C	Weight
00615-100	1"	0.94"	1.15"	1-1/4"	17/32"	13/32"	0.99 lb.
00615-125	1-1/4"	1.26"	1.44"	1-5/8"	17/32"	13/32"	1.57 lb.
00615-150	1-1/2"	1.48"	1.66"	1-3/4"	11/16"	5/8"	2.23 lb.
00615-200	2"	1.91"	2.08"	2-1/4"	11/16"	5/8"	3.51 lb.



DUCT INSTALLATION & PROOFING

DCD