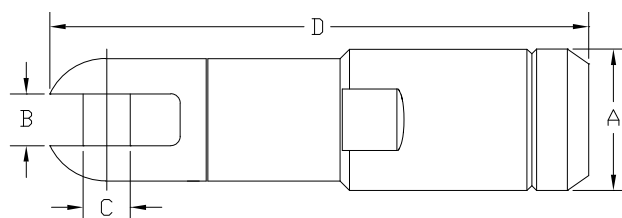


00925 SWIVEL-GRIP™

The Swivel-Grip™ Pulling Eye is re-usable and has a built in swivel with clevis style head that will attach directly over the looped ends of the Bridle Slings or other pulling attachments. All materials are Stainless Steel. Only 4 body sizes are used to cover the range from 1/0 to 1000 MCM cable. Grip is obtained by cutting away the cable jacket, feeding the core through the Cone Nut and driving the tapered insert into the cable core. The higher the load, the further the insert is drawn into the tapered bore and the firmer the grip becomes. The Cone Nuts feature a shortened thread making assembly and removal much quicker. Thorough testing proves that the grip obtained by this method is better than the strength of the cable itself. It is recommended that these Pulling Eyes be used only on cables with more than 7 strand conductors. For cables with less than 7 strands use the Mini Grip, Series 24500. These Pulling Eyes have all the features of our Line Swivel, Series 00505.



Part No.	Cable Size	Max. Cable Conductor Core Dia.	A	B	C	D	Weight	Body	Threaded Cone Nut	Tapered Insert	Fits Wire Rope Bridle Sling
00925-001	1/0 AWG	0.39" 9.9 mm	1-1/4" 32 mm	13/32" 10.3 mm	3/8" 9.5 mm	5-5/8" 143 mm	1.05 lb 0.47 kg	00926-001	24006-001	24005-001	
00925-002	2/0 AWG	0.44" 11.1 mm	1-1/4" 32 mm	13/32" 10.3 mm	3/8" 9.5 mm	5-5/8" 143 mm	1.03 lb 0.46 kg	00926-001	24006-002	24005-001	
00925-003	3/0 AWG	0.50" 12.7 mm	1-1/4" 32 mm	13/32" 10.3 mm	3/8" 9.5 mm	5-5/8" 143 mm	1.00 lb 0.45 kg	00926-001	24006-003	24005-001	1/4"
00925-004	4/0 AWG	0.54" 13.7 mm	1-1/4" 32 mm	13/32" 10.3 mm	3/8" 9.5 mm	5-5/8" 143 mm	0.97 lb 0.44 kg	00926-001	24006-004	24005-001	
00925-025	250 MCM	0.61" 15.5 mm	1-1/4" 32 mm	13/32" 10.3 mm	3/8" 9.5 mm	5-5/8" 143 mm	0.93 lb 0.42 kg	00926-001	24006-025	24005-001	
00925-035	350 MCM	0.71" 18.0 mm	1-7/8" 48 mm	11/16" 17.4mm	5/8" 15.9 mm	7-1/8" 181 mm	3.3 lb 1.49 kg	00926-035	24006-035	24005-035	1/4" & 3/8"
00925-050	500 MCM	0.81" 20.6 mm	1-7/8" 48 mm	11/16" 17.4mm	5/8" 15.9 mm	7-1/8" 181 mm	3.2 lb 1.45 kg	00926-035	24006-050	24005-035	
00925-070	700 MCM	0.97" 24.6 mm	2-1/8" 54 mm	25/32" 19.8 mm	11/16" 17.4mm	8" 203 mm	4.7 lb 2.1 kg	00926-070	24006-070	24005-070	
00925-075C	750 MCM Compact	0.94" 23.8 mm	2-1/8" 54 mm	25/32" 19.8 mm	11/16" 17.4mm	8" 203 mm	4.9 lb 2.2 kg	00926-070	24006-075C	24005-070	3/8" & 1/2"
00925-075	750 MCM	1.00" 25.4 mm	2-1/8" 54 mm	25/32" 19.8 mm	11/16" 17.4mm	8" 203 mm	4.7 lb 2.1 kg	00926-070	24006-075	24005-070	
00925-100	1000 MCM	1.15" 29.2 mm	2-1/8" 54 mm	25/32" 19.8 mm	11/16" 17.4mm	8" 203 mm	4.5 lb 2.0 kg	00926-070	24006-100	24005-070	