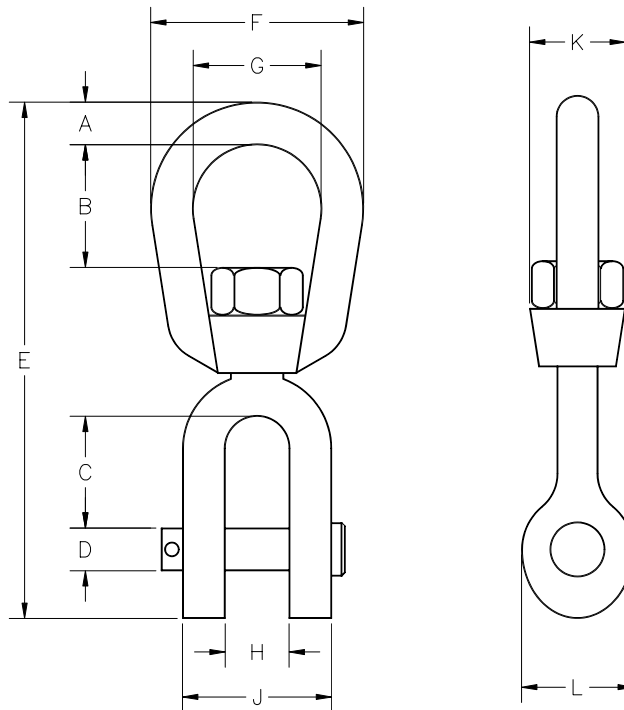


OPERATING SPECIFICATIONS



SERIES 00653 EYE TO CLEVIS CONNECTOR

1. The connector is intended to allow rotational freedom of movement.
2. The connector does not rotate under load.



Part Number	Safe Working Limit	Ultimate Load	A	B	C	D	E	F	G	H	J	K	L	Net Weight
00653-037	2,250 lb 10 kN	11,250 lb 50 kN	3/8" 9 mm	15/16" 24 mm	1-1/16" 27 mm	3/8" 9 mm	4-3/4" 121 mm	2" 51 mm	1-1/4" 32 mm	5/8" 16 mm	1-7/16" 37 mm	1" 25 mm	1" 25 mm	0.66 lb 0.30 kg
00653-050	3,600 lb 16 kN	18,000 lb 80 kN	1/2" 13 mm	1-5/16" 33 mm	1-5/16" 33 mm	1/2" 13 mm	6-1/16" 154 mm	2-1/2" 64 mm	1-1/2" 38 mm	3/4" 19 mm	1-3/4" 44 mm	1-5/16" 33 mm	1-5/16" 33 mm	1.3 lb 0.59 kg
00653-062	5,200 lb 23 kN	26,000 lb 116 kN	5/8" 16 mm	1-9/16" 40 mm	1-1/2" 38 mm	5/8" 16 mm	7-5/16" 186 mm	3" 76 mm	1-3/4" 44 mm	15/16" 24 mm	2-1/16" 53 mm	1-1/2" 38 mm	1-5/8" 41 mm	2.5 lb 1.1 kg

Dimensions and weights subject to change without notice.

The **Safe Working Limit** is calculated using a 5:1 safety factor based on the ultimate load.

The **Ultimate Load** is the tensile load required to separate the connector into two or more parts.