

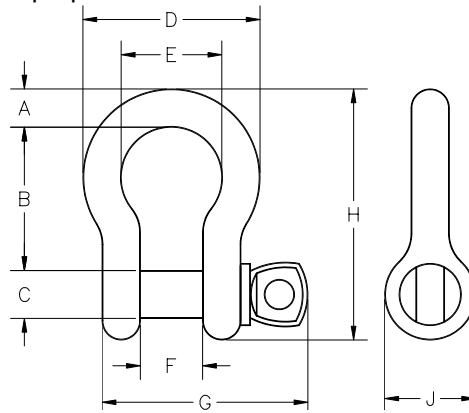
OPERATING SPECIFICATIONS



Design & Manufacturing Ltd.

SERIES 00655 ANCHOR SHACKLE – SCREW PIN

1. The shackle is intended as a general purpose connector.



Part Number	Safe Working Limit	Ultimate Load	A	B	C	D	E	F	G	H	J	Net Weight
00655-031	1,500 lb 6.7 kN	9,000 lb 40 kN	5/16" 8 mm	1-3/16" 30 mm	3/8" 9 mm	1-1/2" 38 mm	13/16" 21 mm	1/2" 13 mm	1-13/16" 46 mm	2-1/16" 52 mm	3/4" 19 mm	0.19 lb 0.09 kg
00655-037	2,000 lb 8.9 kN	12,000 lb 53 kN	3/8" 9 mm	1-7/16" 37 mm	7/16" 10 mm	1-3/4" 44 mm	1" 25 mm	5/8" 16 mm	2-3/16" 56 mm	2-1/2" 64 mm	15/16" 24 mm	0.31 lb 0.14 kg
00655-043	3,000 lb 13 kN	18,000 lb 80 kN	7/16" 10 mm	1-11/16" 43 mm	1/2" 13 mm	2" 51 mm	1-3/16" 30 mm	3/4" 19 mm	2-1/2" 64 mm	2-15/16" 75 mm	1-1/16" 27 mm	0.43 lb 0.20 kg
00655-050	4,000 lb 18 kN	24,000 lb 110 kN	1/2" 13 mm	1-7/8" 48 mm	5/8" 16 mm	2-5/16" 59 mm	1-5/16" 33 mm	13/16" 21 mm	2-13/16" 71 mm	3-1/4" 83 mm	1-3/16" 30 mm	0.70 lb 0.32 kg
00655-062	6,500 lb 29 kN	39,000 lb 170 kN	5/8" 16 mm	2-3/8" 60 mm	3/4" 19 mm	2-15/16" 75 mm	1-11/16" 43 mm	1-1/16" 27 mm	3-1/2" 89 mm	4-3/16" 106 mm	1-1/2" 38 mm	1.4 lb 0.64 kg
00655-075	9,500 lb 42 kN	57,000 lb 150 kN	3/4" 19 mm	2-13/16" 71 mm	1" 25 mm	3-1/2" 89 mm	2" 51 mm	1-1/4" 32 mm	4-3/16" 106 mm	5" 127 mm	1-13/16" 46 mm	2.3 lb 1.0 kg
00655-087	13,000 lb 58 kN	78,000 lb 350 kN	7/8" 22 mm	3-5/16" 85 mm	1-1/8" 29 mm	4" 100 mm	2-1/4" 57 mm	1-7/16" 36 mm	4-5/8" 117 mm	5-7/8" 150 mm	2-1/16" 52 mm	3.5 lb 1.6 kg
00655-100	17,000 lb 76 kN	102,000 lb 450 kN	1" 25 mm	3-3/4" 95 mm	1-1/4" 32 mm	4-11/16" 120 mm	2-11/16" 68 mm	1-11/16" 43 mm	5-3/8" 140 mm	6-5/8" 170 mm	2-3/8" 60 mm	5.2 lb 2.4 kg
00655-112	19,000 lb 85 kN	114,000 lb 510 kN	1-1/8" 29 mm	4-1/4" 110 mm	1-1/4" 32 mm	5-3/16" 130 mm	2-7/8" 73 mm	1-13/16" 46 mm	6" 150 mm	7-1/2" 190 mm	2-11/16" 68 mm	7.6 lb 3.5 kg
00655-125	24,000 lb 107 kN	144,000 lb 640 kN	1-1/4" 32 mm	4-11/16" 120 mm	1-3/8" 35 mm	5-3/4" 145 mm	3-1/4" 83 mm	2" 51 mm	6-3/4" 170 mm	8-1/4" 210 mm	3" 76 mm	11 lb 5.0kg
00655-137	27,000 lb 120 kN	192,000 lb 720 kN	1-3/8" 35 mm	5-1/4" 130 mm	1-1/2" 38 mm	6-3/8" 160 mm	3-5/8" 92 mm	2-1/4" 57 mm	7-1/2" 190 mm	9-1/8" 230 mm	3-5/16" 84 mm	14 lb 6.4 kg
00655-150	34,000 lb 150 kN	204,000 lb 910 kN	1-1/2" 38 mm	5-3/4" 150 mm	1-5/8" 41 mm	6-7/8" 175 mm	1-11/16" 43 mm	2-3/8" 60 mm	7-1/2" 190 mm	10" 255 mm	3-5/8" 92 mm	18 lb 8.2 kg
00655-175	50,000 lb 220 kN	300,000 lb 1,330 kN	1-3/4" 44 mm	7" 180 mm	2" 51 mm	8-7/8" 225 mm	1-11/16" 43 mm	2-7/8" 73 mm	9" 230 mm	12-3/8" 315 mm	4-3/16" 106 mm	28 lb 13 kg
00655-200	70,000 lb 310 kN	420,000 lb 1,870 kN	2" 51 mm	7-3/4" 200 mm	2-1/4" 57 mm	10" 250 mm	1-11/16" 43 mm	3-1/4" 83 mm	10" 255 mm	13-3/4" 350 mm	4-13/16" 122 mm	44 lb 20 kg

Dimensions and weights subject to change without notice.

The **Safe Working Limit** is calculated using a 6:1 safety factor based on the ultimate load.

The **Ultimate Load** is the tensile load required to separate the connector into two or more parts.