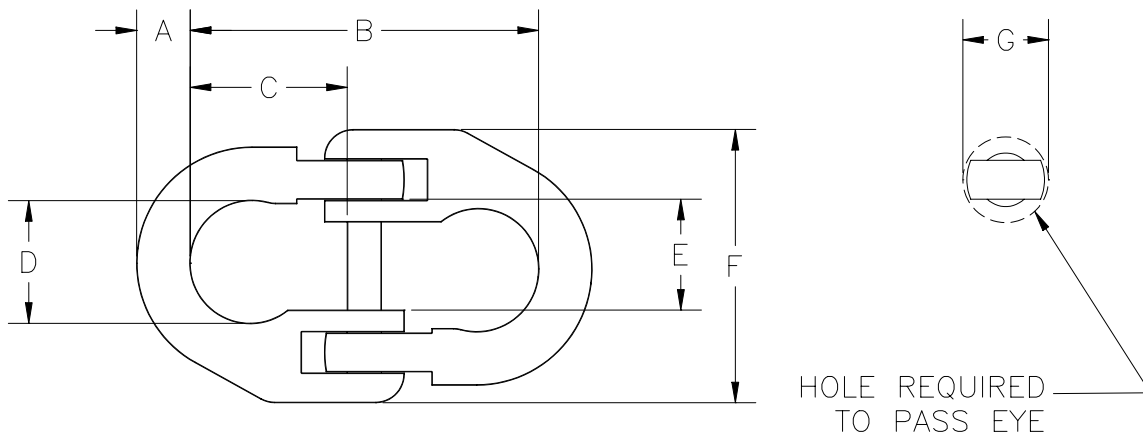


OPERATING SPECIFICATIONS



SERIES 00656 CHAIN LINK CONNECTOR

1. The connector is intended for connecting two pieces of chain.



| Part Number | Safe Working Limit | Ultimate Load | A | B | C | D | E | F | G | Net Weight |
|-------------|-----------------------|-----------------------|-------------------|---------------------|-------------------|--------------------|--------------------|-------------------|------------------|-------------------|
| 00656-028 | 4,650 lb 20.7 kN | 14,000 lb 62.3 kN | 5/16" 7.9 mm | 1-15/16" 49.2 mm | 5/8" 15.9 mm | 5/8" 15.9 mm | 3/4" 19 mm | 1-13/16" 46 mm | 9/16" 14 mm | 0.25 lb 0.1 kg |
| 00656-037 | 9,450 lb 42 kN | 28,400 lb 126.3 kN | 15/32" 11.9 mm | 3" 76.2 mm | 7/8" 22.2 mm | 15/16" 23.8 mm | 1" 25.4 mm | 2-7/16" 62 mm | 3/4" 19 mm | 0.77 lb 0.3 kg |
| 00656-050 | 16,000 lb 71.2 kN | 48,000 lb 213.5 kN | 5/8" 15.9 mm | 3-3/8" 85.7 mm | 1-1/4" 31.8 mm | 1-5/16" 49.2 mm | 1-1/8" 28.6 mm | 3-1/8" 80 mm | 1" 25 mm | 1.5 lb 0.7 kg |
| 00656-062 | 24,100 lb 107.2 kN | 72,400 lb 322.1 kN | 25/32" 19.8 mm | 4-1/16" 103.2 mm | 1-1/2" 38.1 mm | 1-9/16" 39.7 mm | 1-5/16" 33.3 mm | 3-3/4" 95 mm | 1-1/16" 27 mm | 2.4 lb 1.1 kg |

Dimensions and weights subject to change without notice.

The **Safe Working Limit** is calculated using a 3:1 safety factor based on the ultimate load.

The **Ultimate Load** is the tensile load required to separate the shackle into two or more parts.