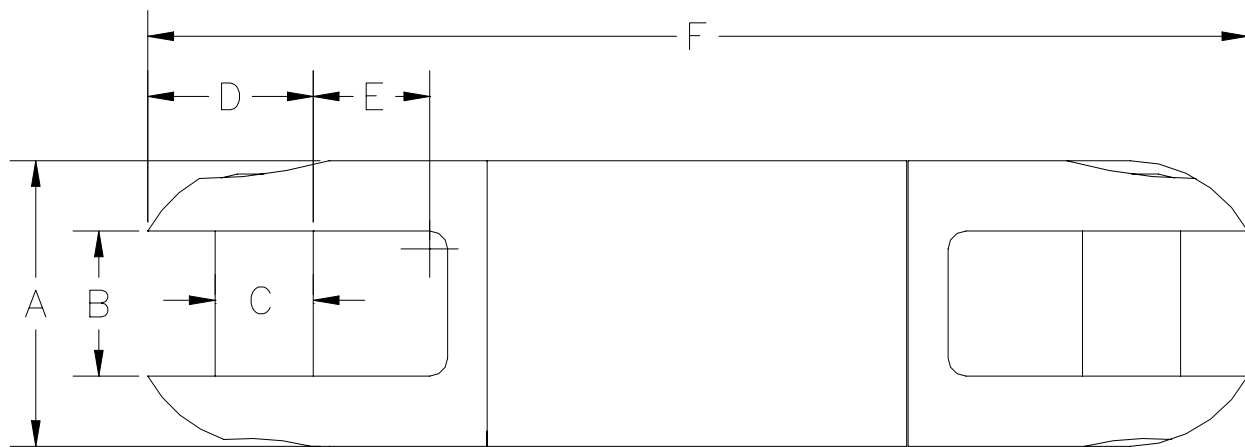


# OPERATING SPECIFICATIONS



## SERIES 00508 DUB-SWIVEL® STYLE 2

1. The DUB Swivel® is specifically designed for directional drilling applications. It is intended for coupling the cutting head to the utility being pulled back. The swivel permits rotation of the cutting head and drill pipe while protecting the utility from twisting.
2. The style 2 swivel has a female clevis located on each end.



Part Number	Safe Working Limit	Ultimate Load	A	B	C	D	E	F	G	Net Weight
00508-202	5,000 lb 22 kN	25,000 lb 111 kN	2" 51 mm	2" 51 mm	1" 25 mm	11/16" 17 mm	1-3/16" 30 mm	13/16" 21 mm	7-1/2" 190 mm	3.8 lb 1.7 kg
00508-205	10,000 lb 44 kN	50,000 lb 222 kN	3-1/8" 80 mm	2-1/4" 57 mm	1-1/4" 32 mm	3/4" 19 mm	1-5/16" 33 mm	7/8" 22 mm	11-1/2" 290 mm	15 lb 6.8 kg
00508-210	20,000 lb 89 kN	100,000 lb 445 kN	3-3/4" 95 mm	2-3/4" 70 mm	1-1/2" 38 mm	1" 25 mm	1-5/8" 41 mm	15/16" 24 mm	13-5/8" 350 mm	27 lb 12 kg
00508-215	30,000 lb 133 kN	150,000 lb 667 kN	4-3/4" 121 mm	3-1/4" 83 mm	1-3/4" 44 mm	1-1/8" 29 mm	2-1/16" 52 mm	1-7/16" 36 mm	18" 460 mm	57 lb 26 kg
00508-220	40,000 lb 178 kN	200,000 lb 890 kN	5-3/4" 146 mm	3-1/2" 89 mm	1-3/4" 44 mm	1-3/8" 35 mm	2-1/2" 63 mm	1-7/16" 36 mm	18-1/2" 470 mm	83 lb 38 kg
00508-230	60,000 lb 267 kN	300,000 lb 1330 kN	6" 152 mm	3-1/2" 89 mm	1-3/4" 44 mm	1-3/8" 35 mm	2-1/2" 63 mm	1-7/16" 36 mm	18-1/2" 470 mm	85 lb 39 kg
00508-240	80,000 lb 356 kN	400,000 lb 1780 kN	6-1/2" 165 mm	4-5/8" 117 mm	2-1/8" 54 mm	1-3/4" 44 mm	3-5/16" 84 mm	1-7/8" 48 mm	24-1/2" 620 mm	150 lb 68 kg
00508-260	120,000 lb 534 kN	600,000 lb 2670 kN	7-1/2" 190 mm	5-1/2" 140 mm	2-3/4" 70 mm	2-1/8" 54 mm	3-5/8" 92 mm	2-5/8" 67 mm	29" 740 mm	250 lb 113 kg
00508-280	160,000 lb 712 kN	800,000 lb 3560 kN	9" 229 mm	6" 152 mm	3-1/4" 83 mm	2-1/2" 63 mm	4-13/16" 122 mm	2-3/4" 70 mm	33-1/2" 850 mm	380 lb 172 kg

Dimensions and weights subject to change without notice.

The **Safe Working Limit** is calculated using a 5:1 safety factor based on the ultimate load.

The **Ultimate Load** is the tensile loading required to separate the DUB-Swivel® into two or more parts.

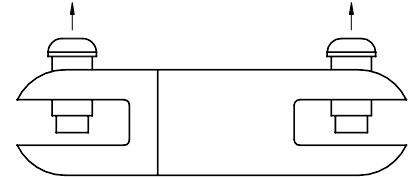
# OPERATING INSTRUCTIONS

## **DCD** Design & Manufacturing Ltd. DUB-SWIVEL<sup>®</sup> STYLE 2



## OPERATION

1. Remove the clevis pins from the swivel.
2. Insert the items you want to attach into the clevis ends. Re assemble the clevis pins and nuts.



## SAFETY

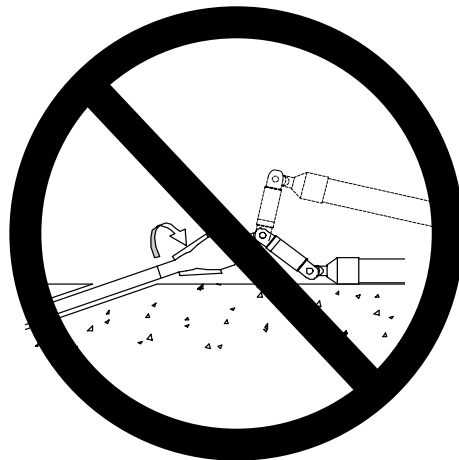
The DUB Swivel<sup>®</sup> is designed to operate only within its specified safe working limit (see *Operating Specifications*). Operation of the DUB Swivel<sup>®</sup> at loads in excess of its **safe working limit** will void the warranty as that may cause permanent bearing damage even though separation due to failure will not occur until the specified **ultimate load** is reached.



Rotating parts can cause death or serious injury! Stay well clear. Do not wear loose clothing.

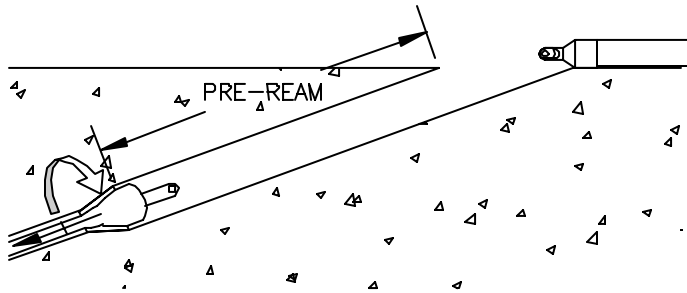


**A swivel is not a universal joint!** It is designed to be used under tension and in a straight line. Any use of this product that allows the swivel to fall away from the centerline of rotation will severely affect the life of the swivel.



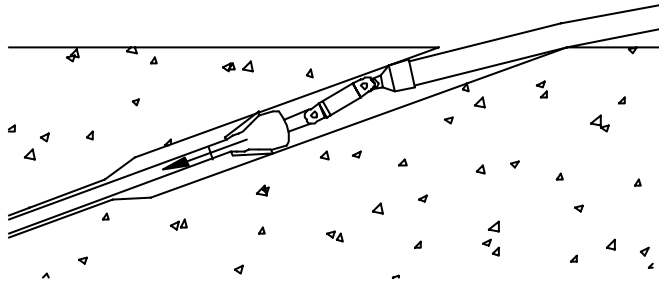
# SAFETY – continued

Use the following procedure for attaching the swivel to the reamer. This procedure will ensure maximum safety for personnel in the area of operation and avoid unnecessary side loads on the swivel which may cause permanent damage.

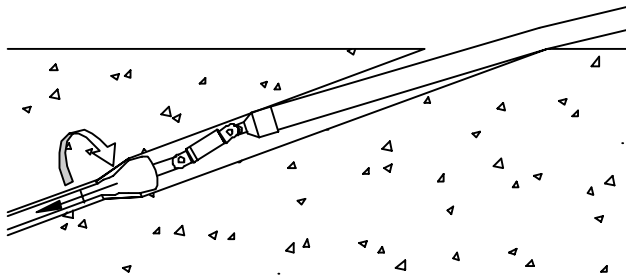


**Step 1** Pre-ream hole to minimum of one drill rod length.

**Step 2** Push reamer back to surface. Attach Dub-Swivel® and Duct Puller to reamer.



**Step 3** Pull back without rotation for the length of the pre-reamed hole.



**Step 4** Start rotation slowly and continue pullback.



**Make sure that all components of the pulling system are able to withstand the maximum pulling loads.** Components not rated for the pull force may break and release the stored energy of the pull. Never use a worn, defective or incomplete component.



**Be prepared for the unexpected.** Always use recognized safety practices and wear recognized safety equipment.



**Do not modify or dismantle the DUB Swivel®.** It has been assembled, and inspected and is only covered by a warranty in its “as shipped” form. Any attempt to dismantle or modify the swivel will result in the warranty becoming void.



**Only replace worn or damaged clevis pins with part supplied by the manufacturer.** The Clevis Pin is designed specifically for this application. It is manufactured and heat treated in a manner to satisfy both design requirements and claimed capacities. Use of any other product as a replacement part will void the warranty and may result in property damage, severe bodily harm, or death to operators or persons nearby. In any such instances, the manufacturer’s warranty will be voided and no responsibility for product failure or personal injury will be accepted.

# OPERATING INSTRUCTIONS

## SERVICE



After each use, while the machine is still rotating, use a water hose to wash all dirt from the split line groove. Pour oil into the groove and rotate the swivel a couple of turns to protect the seal from drying out. Failure to do so will allow mud to dry inside the cavity above the seals, which may damage the rubber portion of the seals.



Assess the condition of the swivel checking for wear and external damage. Check for axial and radial play in the bearings. Replace worn or bent clevis pins.



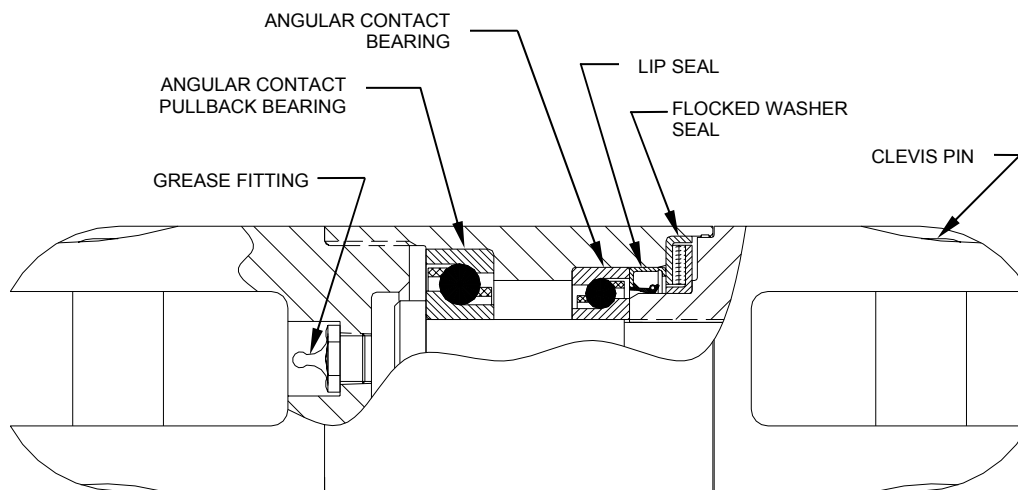
Lubricate the swivel with a **lithium-based grease** containing an extreme pressure (EP) additive (the swivel has been factory lubricated with **Renolit S2TX** grease). Do not mix with calcium or other based greases. Use a hand-operated grease gun with slow pumping action. Lack of proper lubrication will shorten the life of the bearings.



A replacement part kit is available for the DUB Swivel<sup>®</sup> clevis pins. Each kit contains (2) clevis pins. For other spare parts, contact your dealer for price and availability. Never use standard HEX Bolts as replacement for the DCD Clevis Pins.



Factory rebuild services are available for the DUB Swivel<sup>®</sup>. With this service we will replace bearings, seals, and any other worn parts, as well as offer a conditional continuation on our warranty. Assembly of this product is complex and we strongly recommend use of this service. For re-build information call the factory toll free at **1-888-794-8357**.



### IMPORTANT!

WASH OUT SPLIT LINE GROOVE  
AFTER EVERY USE