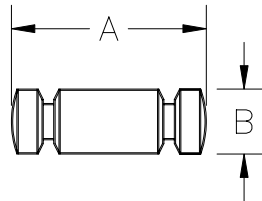


# OPERATING SPECIFICATIONS



## SERIES 00535 BREAKAWAY PIN KIT

1. These pins are used in conjunction with part # 00530-010 breakaway connector or 00550-010 breakaway swivel as mechanical overload protection when installing fiber optic cable.
2. The pins are color coded on one end for ease of identification.
3. The pins are sold in kits of ten pins and ten retaining clips.



Part Number	Breakaway Connector	Breakaway Swivel	Nominal Failure Load	Minimum Failure Load	Maximum Failure Load	A	B	Color Code	Net Kit Weight
00535-002	00530-010	00550-010	200 lb 0.89 kN	180 lb 0.80 kN	220 lb 0.98 kN	3/4" 19 mm	1/4" 6.3 mm	White	0.08 lb 0.04 kg
00535-004	00530-010	00550-010	400 lb 1.78 kN	360 lb 1.61 kN	440 lb 1.96 kN	3/4" 19 mm	1/4" 6.3 mm	Yellow	0.08 lb 0.04 kg
00535-006	00530-010	00550-010	600 lb 2.68 kN	540 lb 2.41 kN	660 lb 2.94 kN	3/4" 19 mm	1/4" 6.3 mm	Orange	0.08 lb 0.04 kg
00535-008	00530-010	00550-010	800 lb 3.57 kN	720 lb 3.21 kN	880 lb 3.92 kN	3/4" 19 mm	1/4" 6.3 mm	Grey	0.08 lb 0.04 kg
00535-010	00530-010	00550-010	1,000 lb 4.46 kN	900 lb 4.01 kN	1,100 lb 4.91 kN	3/4" 19 mm	1/4" 6.3 mm	Red	0.08 lb 0.04 kg

The breakaway pins are designed to break within +/- 10% of their nominal failure load.