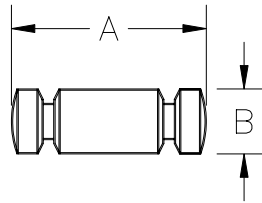


OPERATING SPECIFICATIONS



SERIES 00555 BREAKAWAY PIN KIT

1. These pins are used in conjunction with part #s 00550-005 and 00550-020 breakaway swivels, and 00530-020 breakaway connector as mechanical overload protection when installing cable.
2. The pins are color coded on one end for ease of identification.
3. The pins come in kits and the number of pins in each kit varies with the pin size (see chart below). Retaining clips are included in the kits.



Part Number	Breakaway Connector	Breakaway Swivel	Nominal Failure Load	Minimum Failure Load	Maximum Failure Load	A	B	Color Code	Kit Qty	Net Kit Weight
00555-002	N/A	00550-005	200 lb 0.89 kN	180 lb 0.80 kN	220 lb 0.98 kN	9/16" 14 mm	1/4" 6.3 mm	White	10	0.08 lb 0.04 kg
00555-0034	N/A	00550-005	340 lb 1.50 kN	305 lb 1.35 kN	375 lb 1.65 kN	9/16" 14 mm	1/4" 6.3 mm	Red	10	0.08 lb 0.04 kg
00555-004	N/A	00550-005	400 lb 1.78 kN	360 lb 1.61 kN	440 lb 1.96 kN	9/16" 14 mm	1/4" 6.3 mm	Yellow	10	0.08 lb 0.04 kg
00555-0045	N/A	00550-005	450 lb 2.00 kN	405 lb 1.80 kN	495 lb 2.20 kN	9/16" 14 mm	1/4" 6.3 mm	Blue	10	0.08 lb 0.04 kg
00555-006	N/A	00550-005	600 lb 2.68 kN	540 lb 2.41 kN	660 lb 2.94 kN	9/16" 14 mm	1/4" 6.3 mm	Orange	10	0.08 lb 0.04 kg
00555-007	N/A	00550-005	675 lb 3.00 kN	610 lb 2.71 kN	745 lb 3.31 kN	9/16" 14 mm	1/4" 6.3 mm	Black	10	0.08 lb 0.04 kg
00555-018	00530-020	00550-020	1800 lb 8.03 kN	1620 lb 7.22 kN	1980 lb 8.83 kN	1-5/32" 29 mm	3/8" 9.5 mm	Green	5	0.14 lb 0.06 kg
00555-020	00530-020	00550-020	2000 lb 8.92 kN	1800 lb 8.03 kN	2200 lb 9.81 kN	1-5/32" 29 mm	3/8" 9.5 mm	Blue	5	0.14 lb 0.06 kg

The breakaway pins are designed to break within +/- 10% of their nominal failure load.