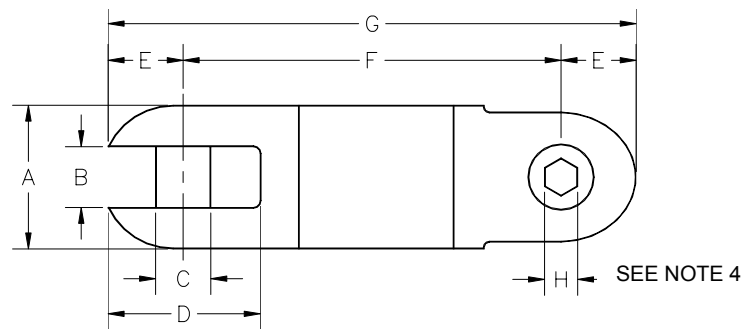


OPERATING SPECIFICATIONS



SERIES 00505 LINE SWIVEL

1. The Line Swivel is intended for connecting the pull rope to the utility product in an overhead or underground application. The swivel permits rotation of the pull rope while protecting the product from twisting.
2. **Line Swivels are not designed to run around bull wheels.**
3. **Line Swivels are not suitable for directional drilling applications.**
4. Slotted clevis pins are supplied standard on swivels 00505-005 to 00505-020.
Hex clevis pins are supplied standard on swivels 00505-025 to 00505-050.



Part Number	Underground Safe Working Limit	Overhead Safe Working Limit	Ultimate Load	A	B	C	D	E	F	G	H	Net Weight
00505-005	750 lb 3.3 kN	450 lb 2.0 kN	2,250 lb 10.0 kN	5/8" 16 mm	9/32" 7.1 mm	3/16" 4.8 mm	11/16" 17.5 mm	1/4" 6.4 mm	2" 51 mm	2-1/2" 64 mm	N/A	0.13 lb 0.06 kg
00505-010	2,250 lb 10.0 kN	1,350 lb 6.0 kN	6,750 lb 30.0 kN	7/8" 22 mm	3/8" 9.5 mm	5/16" 7.9 mm	31/32" 24.6 mm	7/16" 11.1 mm	2-1/2" 64 mm	3-3/8" 86 mm	7/32"	0.33 lb 0.15 kg
00505-015	3,500 lb 15.6 kN	2,100 lb 9.3 kN	10,500 lb 46.7 kN	1" 25 mm	13/32" 10.3 mm	3/8" 9.5 mm	1-3/32" 27.8 mm	1/2" 12.7 mm	2-7/8" 73 mm	3-7/8" 98 mm	1/4"	0.50 lb 0.23 kg
00505-020	5,000 lb 22.2 kN	3,000 lb 13.3 kN	15,000 lb 66.7 kN	1-1/4" 32 mm	17/32" 13.5 mm	13/32" 10.3 mm	1-9/32" 32.5 mm	17/32" 13.5 mm	3-11/16" 94 mm	4-3/4" 121 mm	1/4"	1.0 lb 0.45 kg
00505-025	7,000 lb 31.1 kN	4,200 lb 18.6 kN	21,000 lb 93.4 kN	1-3/8" 35 mm	9/16" 14.3 mm	1/2" 12.7 mm	1-3/8" 35.0 mm	5/8" 15.9 mm	3-7/8" 98 mm	5-1/8" 130 mm	5/16"	1.4 lb 0.63 kg
00505-027	9,000 lb 40.0 kN	5,400 lb 24.0 kN	27,000 lb 120.1 kN	1-1/2" 38 mm	19/32" 15.1 mm	1/2" 12.7 mm	1-9/16" 39.6 mm	11/16" 17.5 mm	4-1/4" 108 mm	5-5/8" 143 mm	5/16"	1.7 lb 0.77 kg
00505-030	10,000 lb 44.5 kN	6,000 lb 26.6 kN	30,000 lb 133.4 kN	1-5/8" 41 mm	11/16" 17.5 mm	5/8" 15.9 mm	1-23/32" 43.7 mm	3/4" 19.1 mm	4-1/2" 114 mm	6" 152 mm	3/8"	2.1 lb 0.95 kg
00505-035	15,000 lb 66.7 kN	9,000 lb 40.0 kN	45,000 lb 200.1 kN	2" 51 mm	25/32" 19.8 mm	11/16" 17.5 mm	2-1/16" 52.4 mm	15/16" 23.8 mm	5-1/8" 130 mm	7" 178 mm	3/8"	3.8 lb 1.7 kg
00505-040	25,000 lb 110 kN	15,000 lb 66 kN	75,000 lb 330 kN	2-3/8" 60 mm	1-1/32" 26.2 mm	7/8" 22.2 mm	2-25/32" 70.6 mm	1-3/16" 30.2 mm	7-15/16" 202 mm	10-5/16" 262 mm	3/8"	7.6 lb 3.5 kg
00505-041*	30,000 lb 133 kN	18,000 lb 80 kN	90,000 lb 400 kN	2-3/8" 60 mm	1-1/32" 26.2 mm	7/8" 22.2 mm	2-25/32" 70.6 mm	1-3/16" 30.2 mm	7-15/16" 202 mm	10-5/16" 262 mm	3/8"	7.6 lb 3.5 kg
00505-045*	50,000 lb 222 kN	30,000 lb 133 kN	150,000 lb 667 kN	3" 76 mm	1-3/16" 30.2 mm	1-1/8" 28.6 mm	3-7/8" 98 mm	1-3/4" 44 mm	10-1/4" 260 mm	13-3/4" 349 mm	7/16"	17 lb 7.7 kg
00505-050*	62,500 lb 278 kN	37,500 lb 166 kN	187,500 lb 834 kN	3-3/4" 95 mm	1-1/2" 38.1 mm	1-1/4" 31.7 mm	4-1/4" 107.9 mm	1-7/8" 47.6 mm	11-13/16" 300 mm	15-9/16" 395 mm	1/2"	34 lb 15.4 kg

Dimensions and weights subject to change without notice.

* These swivels are made from Alloy Steel with a black oxide finish, all others are Stainless Steel.

The **Underground Safe Working Limit** is calculated using a 3:1 safety factor based on the ultimate load.

The **Overhead Safe Working Limit** is calculated using a 5:1 safety factor based on the ultimate load.

The **Ultimate Load** is the tensile load required to separate the Line Swivel into two or more parts.

OPERATING INSTRUCTIONS

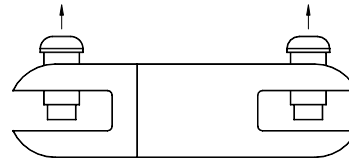
DCD Design & Manufacturing Ltd.

SERIES 00505 LINE SWIVEL



INSTALLATION

1. Remove the clevis pins from the line swivel.
2. Insert the items you want to attach into the clevis ends.
Re assemble the clevis pins.



SAFETY



1. The line swivel is designed to operate only within its specified **safe working limit** (see *Operating Specifications*). Operation of the line swivel at loads in excess of its **safe working limit** will void the warranty as that may cause permanent bearing damage even though separation due to failure will not occur until the specified **ultimate load** is reached.
2. For underground use, the recommended safe working limit is 3:1 based on the ultimate load. For overhead use, the required safe working limit is 5:1 based on the ultimate load due to the higher risk of severe personal injury or property damage.
3. Line swivels are not designed to be pulled over sheaves or bullwheels since a bending load acts to increase the tension in the line swivel and may cause damage. If this situation cannot be avoided, select a line swivel with a safe working limit that is 20% greater than the anticipated straight tension load.
4. Never use a worn, defective or incomplete component. Ensure that all components of the pulling system are able to withstand the maximum pulling loads. Components not rated for the pull force may break and release the stored energy of the pull.
5. Do not modify or dismantle the line swivel. It has been assembled, and inspected and is only covered by a warranty in its "as shipped" form. Any attempt to dismantle or modify the swivel will void the warranty and may result in property damage, severe bodily harm, or death.
6. Be prepared for the unexpected. Use recognized safety practices and wear recognized safety equipment.

SERVICE



1. After each use, assess the condition of the line swivel checking for wear and external damage. Check for axial and radial play in the bearings.
2. Periodically lubricate larger swivels fitted with grease fittings.
3. Replace worn or bent clevis pins with original equipment manufacturer's pins. Replacement kits consisting of two pins are available.