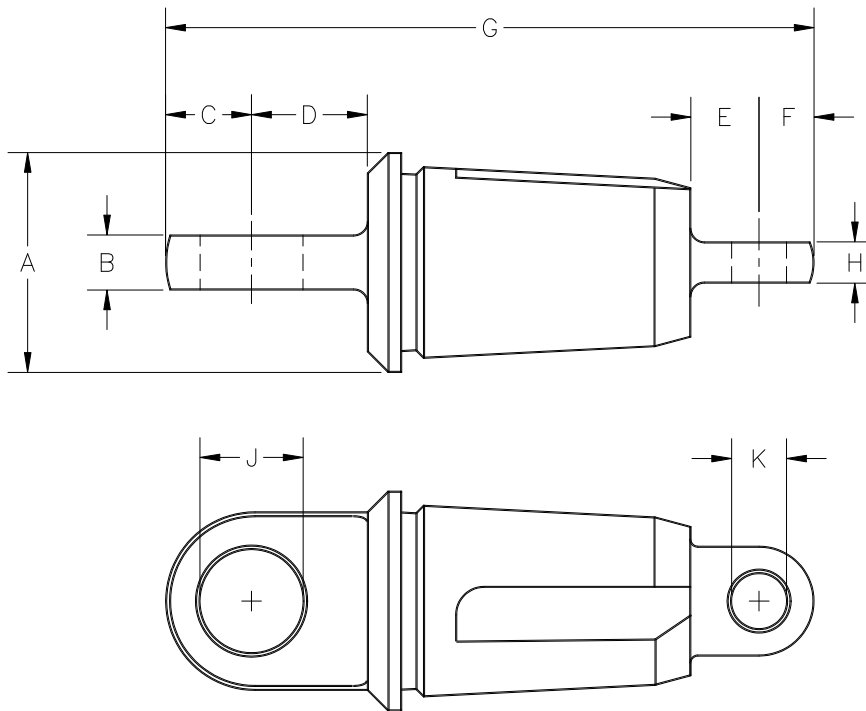


OPERATING SPECIFICATIONS



SERIES 00604 INNERDUCT PULLING EYE

1. The pulling eye is designed to install polyethylene pipe using a screw-in tapered buttress thread to grip the inside diameter of the pipe.
2. The pulling eye is not designed for use with polyvinylchloride (PVC) pipe.



Part Number	Nominal Pipe Size	Minimum Pipe ID	Maximum Pipe ID	A	B	C	D	E	F	G	H	J	K	Net Weight
00604-075	3/4" 19 mm	0.72" 18.3 mm	0.93" 23.6 mm	1-1/8" 29 mm	11/32" 8.7 mm	9/16" 14.3 mm	3/4" 19.1 mm	1/2" 12.7 mm	1/4" 6.4 mm	4-11/16" 122 mm	5/16" 7.9 mm	17/32" 13.5 mm	1/4" 6.4 mm	0.51 lb 0.23 kg
00604-100	1" 25 mm	0.94" 23.9 mm	1.15" 29.2 mm	1-3/8" 35 mm	11/32" 8.7 mm	5/8" 15.9 mm	11/16" 17.5 mm	1/2" 12.7 mm	5/16" 7.9 mm	4-15/16" 125 mm	5/16" 7.9 mm	21/32" 16.7 mm	3/8" 9.5 mm	0.79 lb 0.36 kg
00604-113	1-1/4" TELECOM	1.15" 29.2 mm	1.34" 34.0 mm	1-1/2" 38 mm	11/32" 8.7 mm	5/8" 15.9 mm	11/16" 17.5 mm	1/2" 12.7 mm	5/16" 7.9 mm	5-1/16" 128 mm	5/16" 7.9 mm	21/32" 16.7 mm	3/8" 9.5 mm	1.16 lb 0.53 kg
00604-125	1-1/4" 31 mm	1.26" 32.0 mm	1.44" 34.6 mm	1-3/4" 45 mm	11/32" 8.7 mm	5/8" 15.9 mm	11/16" 17.5 mm	1/2" 12.7 mm	3/8" 9.5 mm	5-3/16" 132 mm	5/16" 7.9 mm	21/32" 16.7 mm	3/8" 9.5 mm	1.40 lb 0.64 kg
00604-150	1-1/2" 38 mm	1.48" 37.6 mm	1.66" 42.2 mm	2" 51 mm	1/2" 12.7 mm	7/8" 22.2 mm	1-1/16" 27.0 mm	5/8" 15.9 mm	1/2" 12.7 mm	5-7/8" 149 mm	3/8" 9.5 mm	15/16" 23.8 mm	1/2" 12.7 mm	2.03 lb 0.92 kg
00604-175	1-3/4" 44 mm	1.66" 42.2 mm	1.81" 45.9 mm	2-1/4" 57 mm	1/2" 12.7 mm	7/8" 22.2 mm	1-1/16" 27.0 mm	5/8" 15.9 mm	1/2" 12.7 mm	6" 152 mm	3/8" 9.5 mm	15/16" 23.8 mm	1/2" 12.7 mm	2.47 lb 1.12 kg
00604-200	2" 63 mm	1.91" 48.5 mm	2.08" 52.8 mm	2-1/2" 64 mm	1/2" 12.7 mm	7/8" 22.2 mm	1-1/16" 27.0 mm	5/8" 15.9 mm	1/2" 12.7 mm	6-1/8" 155 mm	3/8" 9.5 mm	15/16" 23.8 mm	1/2" 12.7 mm	3.20 lb 1.45 kg

Dimensions and weights subject to change without notice.