

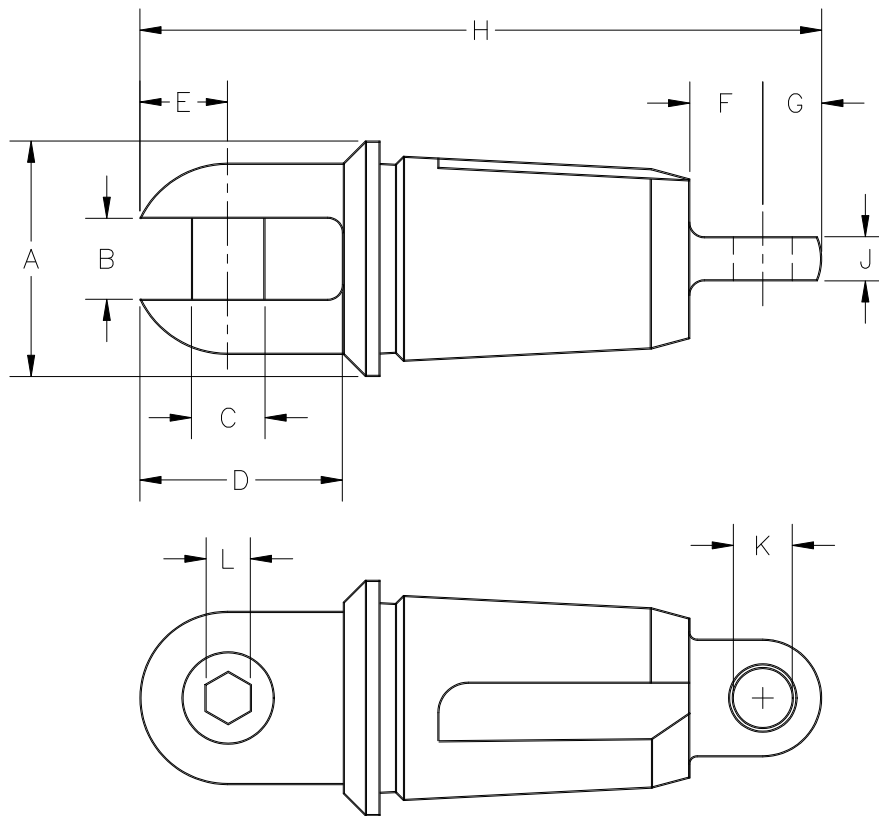
# OPERATING SPECIFICATIONS

## **DCD** Design & Manufacturing Ltd.

### SERIES 00605 INNERDUCT PULLING EYE

1. The pulling eye is designed to install polyethylene pipe using a screw-in tapered buttress thread to grip the inside diameter of the pipe.

2. The pulling eye is not designed for use with polyvinylchloride (PVC) pipe.



| Part Number | Nom Pipe Size   | Min Pipe ID      | Max Pipe ID      | A               | B                 | C                 | D                   | E                 | F               | G               | H                 | J               | K                 | L    | Net Weight         |
|-------------|-----------------|------------------|------------------|-----------------|-------------------|-------------------|---------------------|-------------------|-----------------|-----------------|-------------------|-----------------|-------------------|------|--------------------|
| 00605-100   | 1"<br>32 mm     | 0.94"<br>23.9 mm | 1.15"<br>29.2 mm | 1-3/8"<br>35 mm | 17/32"<br>13.5 mm | 13/32"<br>10.3 mm | 1-9/32"<br>32.5 mm  | 17/32"<br>13.5 mm | 1/2"<br>12.7 mm | 5/16"<br>7.9 mm | 5"<br>127 mm      | 5/16"<br>7.9 mm | 21/32"<br>16.7 mm | SLOT | 0.90 lb<br>0.41 kg |
| 00605-125   | 1-1/4"<br>40 mm | 1.26"<br>32.0 mm | 1.44"<br>36.6 mm | 1-3/4"<br>45 mm | 17/32"<br>13.5 mm | 13/32"<br>10.3 mm | 1-9/32"<br>32.5 mm  | 17/32"<br>13.5 mm | 1/2"<br>12.7 mm | 3/8"<br>9.5 mm  | 5-3/16"<br>132 mm | 5/16"<br>7.9 mm | 21/32"<br>16.7 mm | SLOT | 1.48 lb<br>0.67 kg |
| 00605-150   | 1-1/2"<br>50 mm | 1.48"<br>37.6 mm | 1.66"<br>42.2 mm | 2"<br>51 mm     | 11/16"<br>17.5 mm | 5/8"<br>15.9 mm   | 1-23/32"<br>43.7 mm | 3/4"<br>19.1 mm   | 5/8"<br>15.9 mm | 1/2"<br>12.7 mm | 5-3/4"<br>146 mm  | 3/8"<br>9.5 mm  | 15/16"<br>23.8 mm | 3/8" | 2.20 lb<br>1.0 kg  |
| 00605-200   | 2"<br>63 mm     | 1.91"<br>48.5 mm | 2.08"<br>52.8 mm | 2-1/2"<br>64 mm | 11/16"<br>17.5 mm | 5/8"<br>15.9 mm   | 1-23/32"<br>43.7 mm | 3/4"<br>19.1 mm   | 5/8"<br>15.9 mm | 1/2"<br>12.7 mm | 6"<br>152 mm      | 3/8"<br>9.5 mm  | 15/16"<br>23.8 mm | 3/8" | 3.35 lb<br>1.5 kg  |

Dimensions and weights subject to change without notice.