

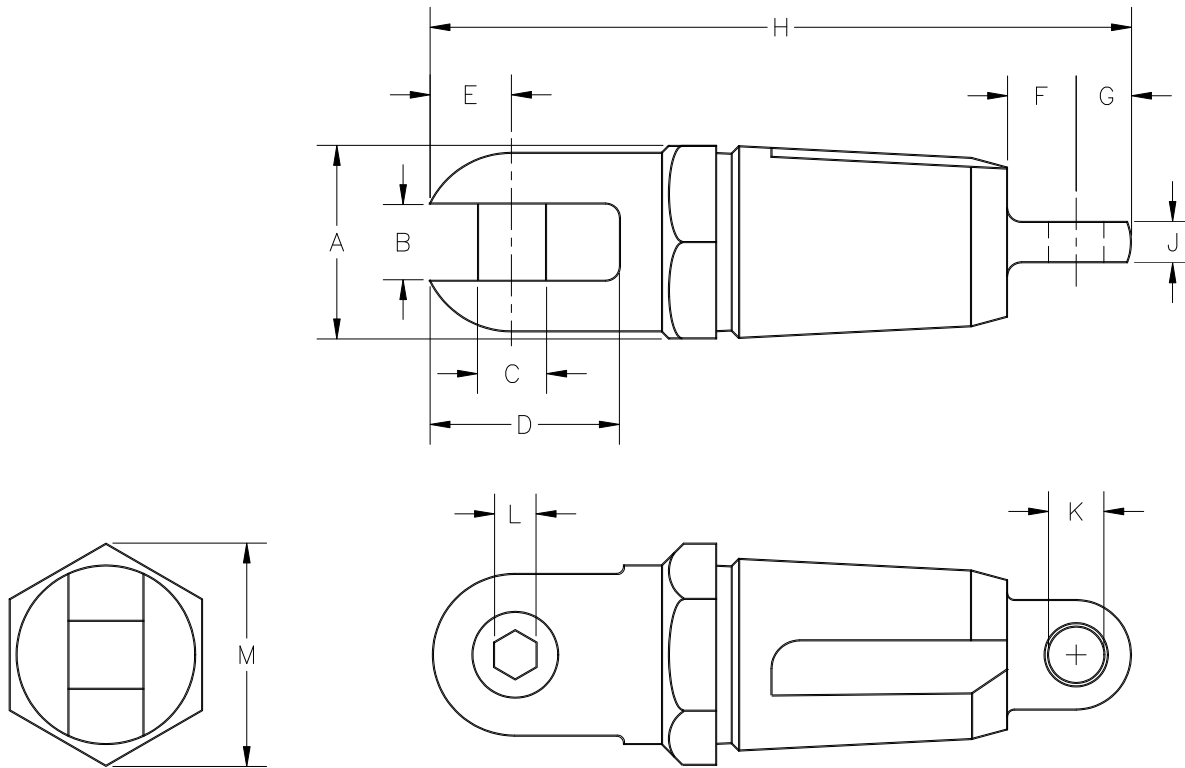
# OPERATING SPECIFICATIONS



## SERIES 00615 INNERDUCT PULLING EYE

1. The pulling eye is designed to install polyethylene pipe using a screw-in tapered buttress thread to grip the inside diameter of the pipe. The integral swivel eliminates the need for a line swivel

2. The pulling eye is not designed for use with polyvinylchloride (PVC) pipe.



Part Number	Nom Pipe Size	Min Pipe ID	Max Pipe ID	A	B	C	D	E	F	G	H	J	K	L	M	Net Weight
00615-100	1" 32 mm	0.94" 23.9 mm	1.15" 29.2 mm	1-1/4" 31.8 mm	17/32" 13.5 mm	13/32" 10.3 mm	1-9/32" 32.5 mm	17/32" 13.5 mm	1/2" 12.7 mm	5/16" 7.9 mm	5-7/16" 138 mm	5/16" 7.9 mm	3/8" 9.5 mm	SLOT	1-7/16" 37 mm	0.99 lb 0.45 kg
00615-125	1-1/4" 40 mm	1.26" 32.0 mm	1.44" 36.6 mm	1-5/8" 41.3 mm	17/32" 13.5 mm	13/32" 10.3 mm	1-9/32" 32.5 mm	17/32" 13.5 mm	1/2" 12.7 mm	3/8" 9.5 mm	5-1/2" 140 mm	5/16" 7.9 mm	3/8" 9.5 mm	SLOT	1-7/8" 48 mm	1.57 lb 0.71 kg
00615-150	1-1/2" 50 mm	1.48" 37.6 mm	1.66" 42.2 mm	1-3/4" 44.4 mm	11/16" 17.5 mm	5/8" 15.9 mm	1-23/32" 43.7 mm	3/4" 19.1 mm	5/8" 15.9 mm	1/2" 12.7 mm	6-5/16" 160 mm	3/8" 9.5 mm	1/2" 12.7 mm	3/8"	2" 51 mm	2.23 lb 1.01 kg
00615-200	2" 63 mm	1.91" 48.5 mm	2.08" 52.8 mm	2-1/4" 54.0 mm	11/16" 17.5 mm	5/8" 15.9 mm	1-23/32" 43.7 mm	3/4" 19.1 mm	5/8" 15.9 mm	1/2" 12.7 mm	6-9/16" 166 mm	3/8" 9.5 mm	1/2" 12.7 mm	3/8"	2-5/8" 66 mm	3.51 lb 1.59 kg

Dimensions and weights subject to change without notice.