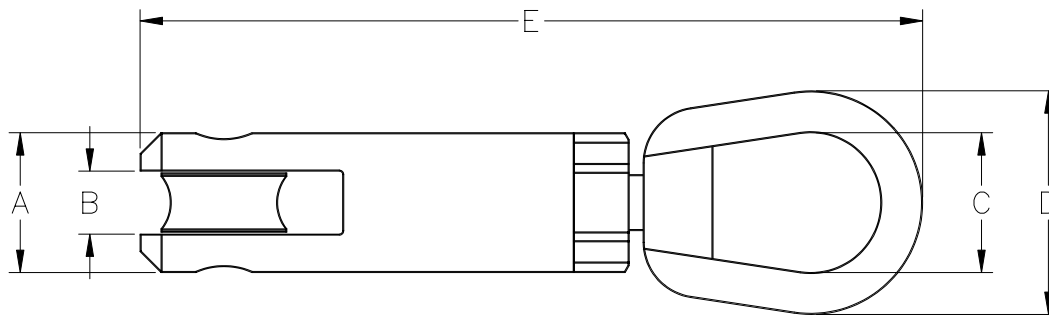


OPERATING SPECIFICATIONS



SERIES 00501 WIRE GRIP SWIVEL

1. The swivel is used in conjunction with a wire mesh grip and is intended to allow the utility being installed to unwind as it is being pulled in.
2. **The swivel will not rotate under load.**



Part Number	Minimum Breaking Strength	A	B	C	D	E	Net Weight
00501-010	10,000 lb 44.4 kN	1-1/4" 32 mm	9/16" 14.3 mm	1-1/4" 32 mm	2" 51 mm	7" 178 mm	1.5 lb 0.68 kg
00501-025	25,000 lb 111 kN	1-5/8" 41 mm	9/16" 14.3 mm	1-3/4" 44 mm	3" 76 mm	8-5/8" 220 mm	3.3 lb 1.5 kg

Dimensions and weights subject to change without notice.

The **Minimum Breaking Strength** is the lowest load at which the swivel will fail.

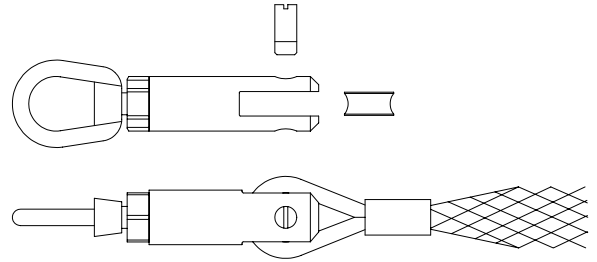
OPERATING INSTRUCTIONS

DCD Design & Manufacturing Ltd. SERIES 00501 WIRE GRIP SWIVEL



INSTALLATION

1. Remove the roller pin and roller from the swivel.
2. Insert the eye of the wire mesh grip onto the roller.
3. Replace the roller and pin into the swivel.



SAFETY



1. The swivel is designed to operate only within its specified **safe working limit** (see *Operating Specifications*). Operation of the swivel at loads in excess of its **safe working limit** will void the warranty even though separation due to failure will not occur until the specified **ultimate load** is reached.
2. For underground use, the recommended safe working limit is 3:1 based on the ultimate load. For overhead use, the required safe working limit is 5:1 based on the ultimate load due to the higher risk of severe personal injury or property damage.
3. Never use a worn, defective or incomplete component. Ensure that all components of the pulling system are able to withstand the maximum pulling loads. Components not rated for the pull force may break and release the stored energy of the pull.
4. Do not modify the swivel. It is only covered by a warranty in its "as shipped" form. Any attempt to modify the swivel will void the warranty and may result in property damage, severe bodily harm, or death.
5. Be prepared for the unexpected. Use recognized safety practices and wear recognized safety equipment.

SERVICE



1. After each use, examine the condition of the swivel. Replace worn or bent clevis pins with original equipment manufacturer's pins.