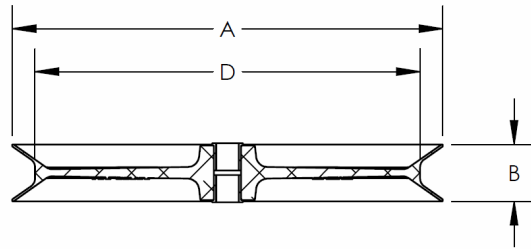
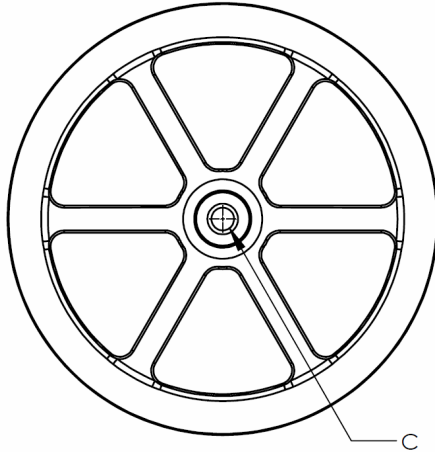


# OPERATING SPECIFICATIONS

**DCD** Design & Manufacturing Ltd.

SERIES 32900 Sheave

- The Sheave is designed to take the full load at entry or exit points of the pull.



| Part Number | A                | B               | C              | D                | Maximum Cable Diameter   | Net Weight       |
|-------------|------------------|-----------------|----------------|------------------|--------------------------|------------------|
| 32900-202P  | 2-3/8" / 60 mm   | 2-1/4" / 57 mm  | 5/8" / 16 mm   | 1-1/8" / 28.6 mm | 1-3/16" / 30 mm          | 0.2 lb / 0.09 kg |
| 32900-303   | 3" / 76 mm       | 3" / 76 mm      | 3/4" / 19 mm   | 1-1/2" / 38 mm   | 2-1/2" / 63.5 mm         | 1.1 lb / 0.5 kg  |
| 32900-307   | 7" / 178 mm      | 3-3/8" / 86 mm  | 1-1/4" / 32 mm | 3-3/4" / 95 mm   | 3" / 76 mm               | 6 lb / 2.7 kg    |
| 32900-324   | 23-3/4" / 603 mm | 3" / 76 mm      | 1-1/4" / 32 mm | 21-1/4" / 540 mm | 1-3/8" / 35 mm           | 17 lb / 7.7 kg   |
| 32900-407   | 7" / 178 mm      | 4" / 102 mm     | 1-1/4" / 32 mm | 3-3/4" / 95 mm   | 3-3/4" / 95 mm           | 8 lb / 3.6 kg    |
| 32900-411   | 11" / 279 mm     | 4-3/8" / 111 mm | 1-1/4" / 32 mm | 7-1/2" / 191 mm  | 4" / 101.6 mm            | 15 lb / 6.8 kg   |
| 32900-420   | 20" / 508 mm     | 4-3/4" / 121 mm | 1-1/4" / 32 mm | 17" / 432 mm     | 4" / 101.6 mm            | 31 lb / 14 kg    |
| 32900-507   | 7" / 178 mm      | 4-3/4" / 121 mm | 1-1/4" / 32 mm | 3-3/4" / 95 mm   | 4-5/8" / 117.5 mm        | 9 lb / 4.1 kg    |
| 32900-511   | 11" / 279 mm     | 5-3/8" / 137 mm | 1-1/4" / 32 mm | 6-1/2" / 165 mm  | 5" / 127 mm              | 18 lb / 8.2 kg   |
| 32900-526   | 26-5/8" / 676 mm | 5-3/8" / 137 mm | 1-1/4" / 32 mm | 22-1/2" / 572 mm | 4-7/8" / 124 mm          | 49 lb / 22.2 kg  |
| 32900-526F  | 26-5/8" / 676 mm | 5-3/8" / 137 mm | 1-1/4" / 32 mm | 22-1/2" / 572 mm | 3 x 1-1/2" / 3 x 38 mm   | 51 lb / 23.1 kg  |
| 32900-526R* | 26-5/8" / 676 mm | 5-3/8" / 137 mm | 2" / 50.8 mm   | 22-1/2" / 572 mm | 4-7/8" / 124 mm          | 49 lb / 22.2 kg  |
| 32900-611   | 11" / 279 mm     | 6-3/8" / 162 mm | 1-1/4" / 32 mm | 5-1/2" / 140 mm  | 5-7/8" / 149 mm          | 21 lb / 9.5 kg   |
| 32900-620F  | 20-7/8" / 530 mm | 6-3/8" / 162 mm | 1-1/4" / 32 mm | 17" / 432 mm     | 3 x 1-3/4" / 3 x 44.5 mm | 47 lb / 21.3 kg  |
| 32900-626   | 26-5/8" / 676 mm | 6-3/8" / 162 mm | 1-1/4" / 32 mm | 21" / 533.4 mm   | 5-7/8" / 149 mm          | 65 lb / 29.5 kg  |
| 32900-702   | 3" / 76 mm       | 7" / 178 mm     | -              | 1-1/2" / 38 mm   | 3/4" / 19 mm             | 5 lb / 2.3 kg    |
| 32900-811   | 11" / 279 mm     | 8-3/8" / 213 mm | 1-1/4" / 32 mm | 4-3/4" / 121 mm  | 8" / 203 mm              | 27 lb / 12.2 kg  |
| 32900-811F  | 11" / 279 mm     | 8-3/8" / 213 mm | 1-1/4" / 32 mm | 6" / 152.4 mm    | 3 x 2-3/8" / 3 x 60 mm   | 24 lb / 10.9 kg  |

- Dimensions and weights subject to change without notice.

\* This unit uses needle roller bearings and is precision fit to a 2" dia. shaft, undersized to 1.9987". Install bearing inner race sleeve before use.

## 32800 Compatibility

| Part Number | 32800-400 | 32800-500 | 32800-600 / -601 | 32800-800 |
|-------------|-----------|-----------|------------------|-----------|
| 32900-202P  | X         | X         | X                | X         |
| 32900-303   | X         | X         | X                | X         |
| 32900-307   | √         | √         | √                | √         |
| 32900-324   | √         | √         | √                | √         |
| 32900-407   | √         | √         | √                | √         |
| 32900-411   | √         | √         | √                | √         |
| 32900-420   | √         | √         | √                | √         |
| 32900-507   | √         | √         | √                | √         |
| 32900-511   | X         | √         | √                | √         |
| 32900-526   | X         | √         | √                | √         |
| 32900-526F  | X         | √         | √                | √         |
| 32900-526R* | X         | √         | √                | √         |
| 32900-611   | X         | X         | √                | √         |
| 32900-620F  | X         | X         | √                | √         |
| 32900-626   | X         | X         | √                | √         |
| 32900-702   | X         | X         | X                | √         |
| 32900-811   | X         | X         | X                | √         |
| 32900-811F  | X         | X         | X                | √         |

- Dimensions and weights subject to change without notice.
- This compatibility also applies to 32810 series double hangers.

## SAFETY



1. The 32900 Sheaves are designed to operate only within its specified parameters and corresponding equipment. Operation in excess of **safe working limit** will void the warranty.
2. The recommended safe working limit is 3:1 based on its ultimate load.
3. Never use a worn, defective or incomplete component. Ensure that all components of the pulling system are able to withstand the maximum pulling loads. Components not rated for the pull force may break and release the stored energy of the pull.
4. Do not modify the 32900 series sheaves. They are only covered by a warranty in its “as shipped” form. Any attempt to modify the sheaves will void the warranty and may result in property damage, severe bodily harm, or death.
5. Be prepared for the unexpected. Use recognized safety practices and wear recognized safety equipment.

## SERVICE



Replacement parts are available for this product.