

OPERATING INSTRUCTIONS



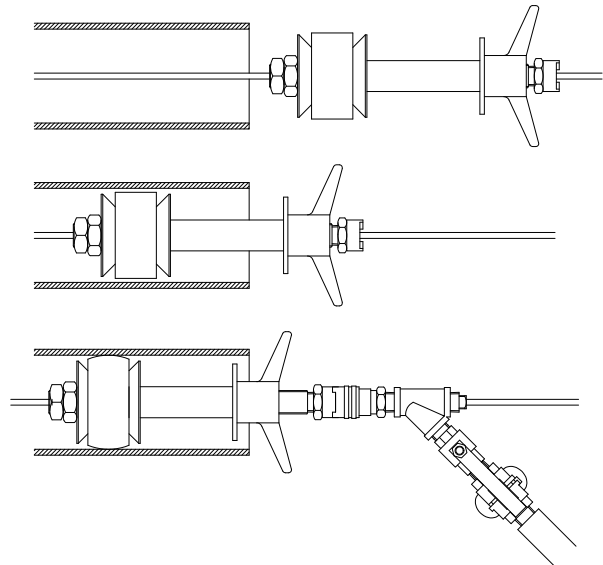
**Design &
Manufacturing Ltd.**

SERIES 58200 DUCT SEAL



INSTALLATION

1. Feed the line to be blown through the control valve and through the duct seal.
2. Attach the line dart to the end of the line.
3. Insert the dart and duct seal into the end of the duct and turn the handle clockwise to expand it in the duct.
4. Connect the control valve and begin blowing.
5. To change seal kits, remove the two jam nuts from the end of the handle assembly. Remove the old seal assembly, spacer tube, and support disc.
6. Replace with new support disc, spacer tube and new seal assembly. Replace jam nuts ensuring to tighten one nut against the other.



SAFETY



1. Ensure that the duct seal is securely installed before opening the control valve handle.
2. Never use a worn, defective or incomplete component. Ensure that all components of the system are able to withstand the maximum system pressures. Components not rated for the system pressure may fail and release the stored energy.
3. Do not modify the duct seal. It is only covered by a warranty in its "as shipped" form. Any attempt to modify the duct seal will void the warranty and may result in property damage, severe bodily harm, or death.
4. Be prepared for the unexpected. Use recognized safety practices and wear recognized safety equipment.

SERVICE



1. There are no service or maintenance procedures for this product.