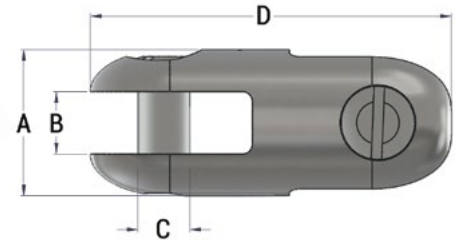


Can-Link™ Connector

The Can-Link™ Connector is used to connect two items with lugs or wire loop fittings. A common use is to connect a wire mesh grip to the pulling wire. The connectors are manufactured from high strength stainless steel with hardened clevis pins.

The two smaller sizes have slotted clevis pins, while the larger sizes have hexagon clevis pins, all of which are available as spares (see page 11).

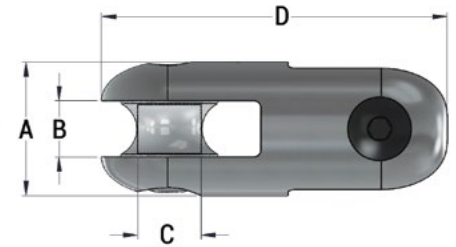


Part No.	3:1 Safe Working Load	A	B	C	D	Weight
00520-010	2,500 lb	7/8"	3/8"	5/16"	2-1/8"	0.17 lb
00520-020	5,000 lb	1-1/4"	17/32"	13/32"	2-7/8"	0.46 lb
00520-027	9,000 lb	1-1/2"	19/32"	1/2"	3-3/8"	0.73 lb
00520-035	15,000 lb	2"	25/32"	11/16"	4-9/16"	2.0 lb
00520-040	25,000 lb	2-13/32"	1"	7/8"	6-7/32"	4.0 lb

Rope-to-Rope Connector

This product is used to connect two ropes of up to 7/8" dia. The entire product, including sheaves, is manufactured from stainless steel.

Replacement sheaves are available by contacting the customer service department. The sheaves run on standard DCD clevis pins, which are also available as spares (see page 11).

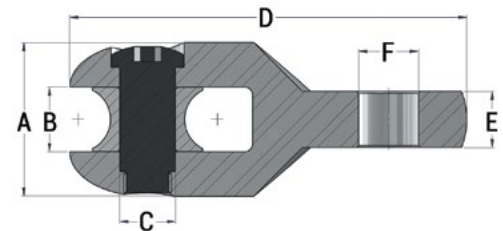


Part No.	3:1 Safe Working Load	Maximum Rope Diameter	A	B	C	D	Weight
00521-020	15,000 lb	5/8"	1-3/4"	3/4"	11/16"	4-7/8"	1.6 lb
00521-035	15,000 lb	7/8"	2"	15/16"	11/16"	5-1/2"	2.7 lb
00521-040	25,000 lb	7/8"	2-13/32"	1"	7/8"	6-7/32"	4.5 lb

Rope-to-Swivel Connector

This product is used to connect a swivel to pulling rope. The entire product, including sheave, is manufactured from stainless steel.

Replacement sheaves are available by contacting Customer Service. The sheaves run on standard DCD clevis pins, which are also available as spares (see page 11).



Part No.	3:1 Safe Working Load	Maximum Rope Diameter	A	B	C	D	E	F	Weight	Fits Line Swivel
00522-020	15,000 lb	5/8"	1-3/4"	3/4"	11/16"	4-7/8"	21/32"	3/4"	1.6 lb	00505-030 00505-035
00522-020A	15,000 lb	5/8"			Same as above without sheave				1.3 lb	
00522-025	7,000 lb	7/8"	2"	15/16"	11/16"	5-5/16"	1/2"	17/32"	2.1 lb	00505-020 00505-025 00505-027
00522-025A	7,000 lb	7/8"			Same as above without sheave				1.8 lb	
00522-035	15,000 lb	7/8"	2"	15/16"	11/16"	5-3/8"	21/32"	3/4"	2.3 lb	00505-030 00505-035
00522-035A	15,000 lb	7/8"			Same as above without sheave				2.0 lb	
00522-040	25,000 lb	7/8"	2"	1"	7/8"	6-7/32"	7/8"	15/16"	3.9 lb	00505-040
00522-040A	25,000 lb	7/8"			Same as above without sheave				3.6 lb	

HDD Tools
 Swivels & Connectors
 Pulling Grips
 Cable Pulling Eyes
 Duct Installation
 Manhole Tools
 Cable Lubricants
 Cable Pullers
 Duct Padders
 Line Blowing
 Overhead Products