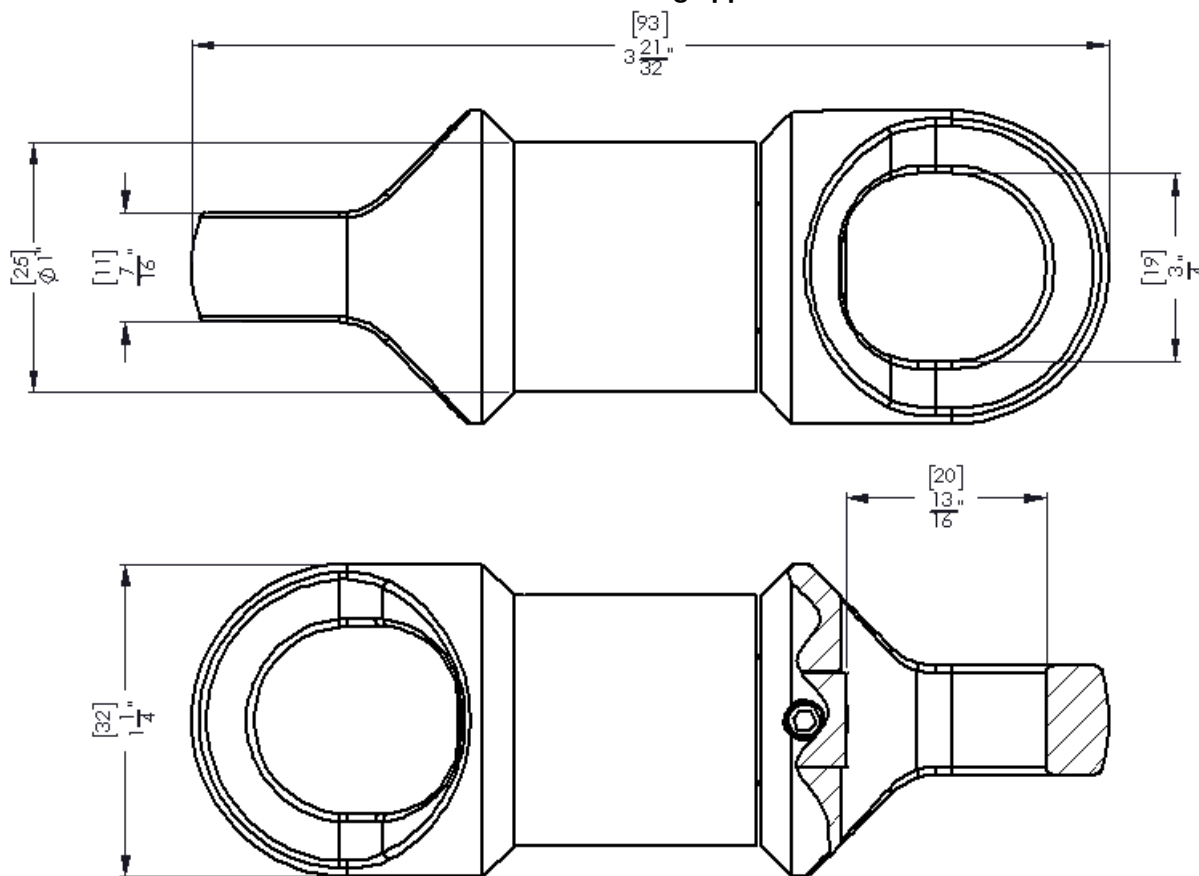


OPERATING SPECIFICATIONS



SERIES 00505 LINE SWIVEL TYPE 2 – EYE TO EYE

1. The Line Swivel is intended for connecting other hardware such as carabiners or rope in an overhead. The swivel permits free-spinning rotation of the components.
2. **Line Swivels are not designed to run around bull wheels.**
3. **Line Swivels are not suitable for directional drilling applications.**



Part Number	3:1 Safe Working Limit	5:1 Safe Working Limit	Ultimate Load	Net Weight
00505-215	3,500 lb 15.6 kN	2,100 lb 9.3 kN	10,500 lb 46.7 kN	0.50 lb 0.23 kg

Dimensions and weights subject to change without notice.

These swivels are made from Stainless Steel components and possess a flat grey finish.

The **Ultimate Load** is the minimum tensile load required to separate the Line Swivel into two or more parts.

Developed in collaboration with:

The Underground Circus



OPERATING INSTRUCTIONS

DCD Design & Manufacturing Ltd.

SERIES 00505 LINE SWIVEL



INSTALLATION

1. Insert the items you want to attach into the clevis ends.

SAFETY



1. The line swivel is designed to operate only within its specified **safe working limit** (see *Operating Specifications*). Operation of the line swivel at loads in excess of its **3:1 safe working limit** will void the warranty as that may cause permanent bearing damage even though separation due to failure will not occur until the specified **ultimate load** is reached.
2. For underground use, the recommended safe working limit is 3:1 based on the ultimate load. For overhead use, the required safe working limit is 5:1 based on the ultimate load due to the higher risk of severe personal injury or property damage.
3. Line swivels are not designed to be pulled over sheaves or bullwheels since a bending load acts to increase the tension in the line swivel and may cause damage. If this situation cannot be avoided, select a line swivel with a safe working limit that is 20% greater than the anticipated straight tension load.
4. Never use a worn, defective or incomplete component. Ensure that all components of the pulling system are able to withstand the maximum pulling loads. Components not rated for the pull force may break and release the stored energy of the pull.
5. Do not modify or dismantle the line swivel. It has been assembled, and inspected and is only covered by a warranty in its "as shipped" form. Any attempt to dismantle or modify the swivel will void the warranty and may result in property damage, severe bodily harm, or death.
6. Be prepared for the unexpected. Use recognized safety practices and wear recognized safety equipment.

SERVICE



1. After each use, assess the condition of the line swivel checking for wear and external damage. Check for axial and radial play in the bearings.