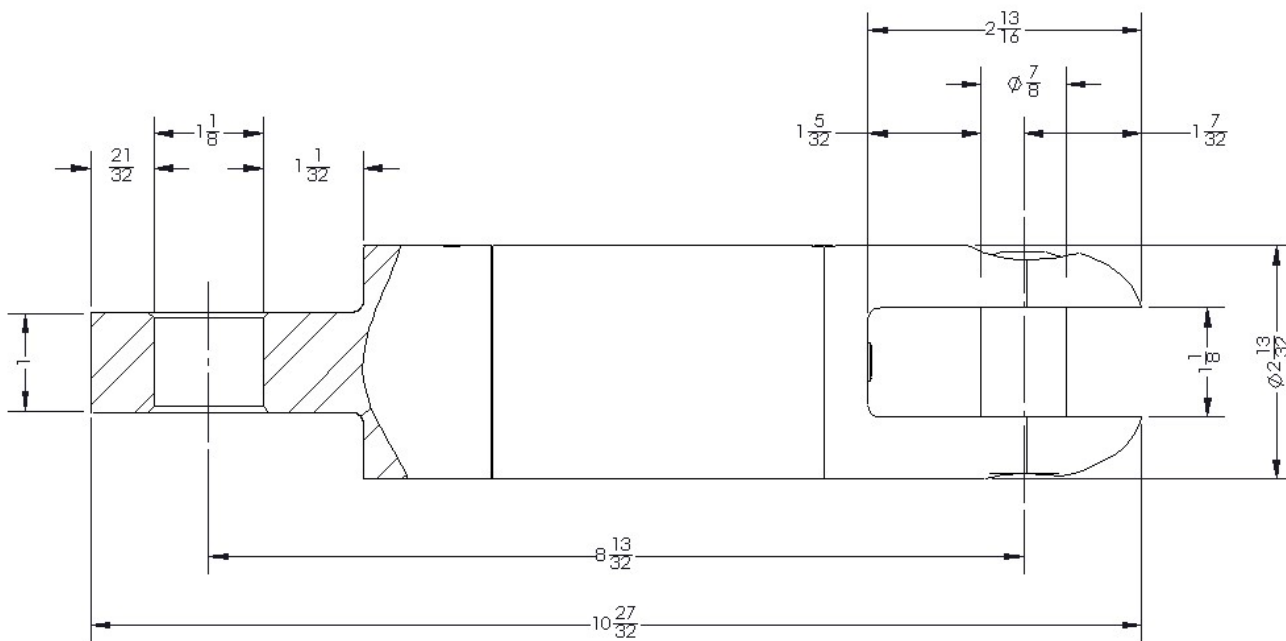


OPERATING SPECIFICATIONS

DCD Design & Manufacturing Ltd.

00505-340S MARINE GRADE LINE SWIVEL

1. The Line Swivel is intended for connecting directly to the 00560-020S marine grade breakaway connector in a marine grade environment. The swivel permits rotation of the pull rope while protecting the product and breakaway connector from twisting. It is also intended for use with A075533 marine grade shackles.
2. **Line Swivels are not designed to run around bull wheels.**
3. **Line Swivels are not suitable for directional drilling applications.**
4. Hex clevis pins are supplied standard for the clevis end.



Part Number	Underground Safe Working Limit	Overhead Safe Working Limit	Ultimate Load	Net Weight
00505-340S	18,000 lb 80 kN	10,800 lb 48 kN	54,000 lb 240.2 kN	9.5 lb 4.3 kg

Dimensions and weights subject to change without notice.

* These swivels are made from Marine grade Stainless Steel.

The **Underground Safe Working Limit** is calculated using a 3:1 safety factor based on the ultimate load.

The **Overhead Safe Working Limit** is calculated using a 5:1 safety factor based on the ultimate load.

The **Ultimate Load** is the tensile load required to separate the Line Swivel into two or more parts.

OPERATING INSTRUCTIONS



**Design &
Manufacturing Ltd.**

00505-340S MARINE GRADE LINE SWIVEL



INSTALLATION

1. Remove the clevis pin from the line swivel.
2. Insert the items you want to attach into the clevis end and lug end.
Re assemble the clevis pin.

SAFETY



1. The line swivel is designed to operate only within its specified **safe working limit** (see *Operating Specifications*). Operation of the line swivel at loads in excess of its **safe working limit** will void the warranty as that may cause permanent bearing damage even though separation due to failure will not occur until the specified **ultimate load** is reached.
2. For underground use, the recommended safe working limit is 3:1 based on the ultimate load. For overhead use, the required safe working limit is 5:1 based on the ultimate load due to the higher risk of severe personal injury or property damage.
3. Line swivels are not designed to be pulled over sheaves or bullwheels since a bending load acts to increase the tension in the line swivel and may cause damage. If this situation cannot be avoided, select a line swivel with a safe working limit that is 20% greater than the anticipated straight tension load.
4. Never use a worn, defective or incomplete component. Ensure that all components of the pulling system are able to withstand the maximum pulling loads. Components not rated for the pull force may break and release the stored energy of the pull.
5. Do not modify or dismantle the line swivel. It has been assembled, and inspected and is only covered by a warranty in its "as shipped" form. Any attempt to dismantle or modify the swivel will void the warranty and may result in property damage, severe bodily harm, or death.
6. Be prepared for the unexpected. Use recognized safety practices and wear recognized safety equipment.

SERVICE



1. After each use, assess the condition of the line swivel checking for wear and external damage. Check for axial and radial play in the bearings.
2. Periodically lubricate larger swivels fitted with grease fittings.
3. Replace worn or bent clevis pins with original equipment manufacturer's pins. Replacement kits consisting of two pins are available.