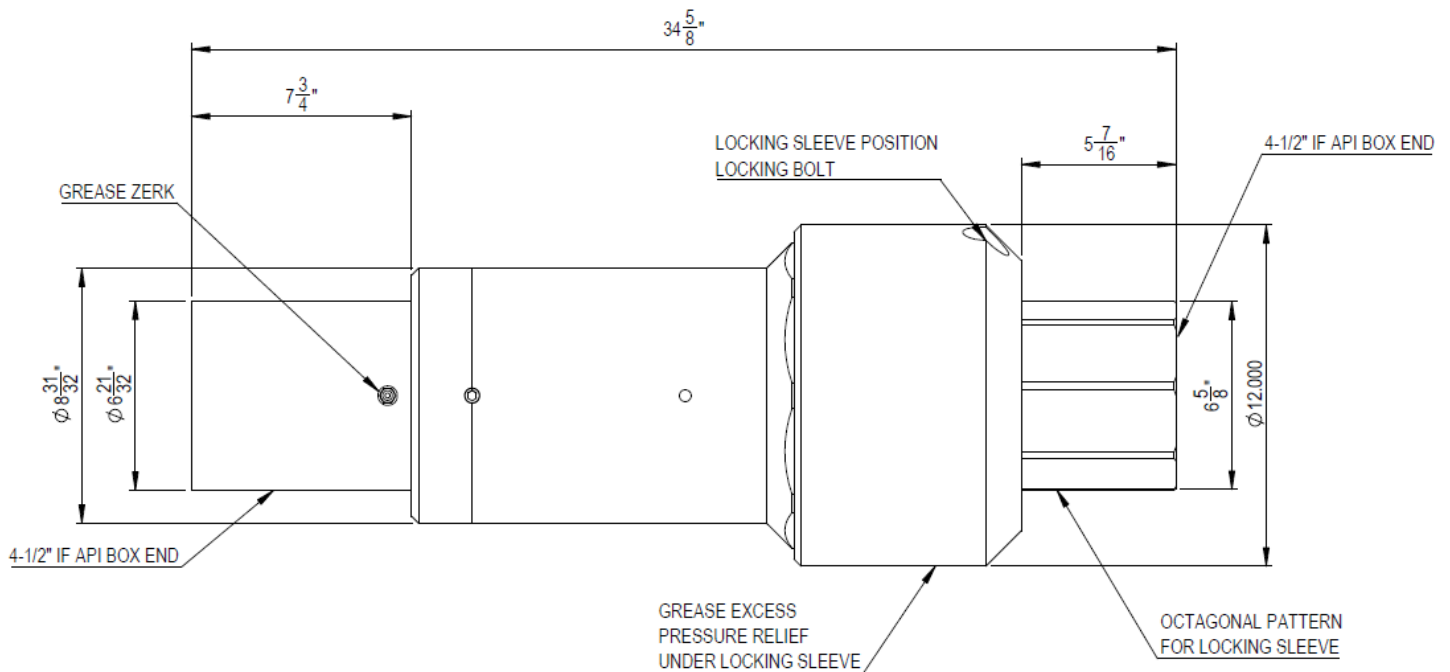


OPERATING SPECIFICATIONS



SERIES 00508 MAXI DUB-SWIVEL® BOX x BOX, LOCKING SWIVEL

1. The MAXI DUB Swivel® is specifically designed for directional drilling applications. It is intended for coupling with the drill string. The swivel locking sleeve can be unbolted to allow rotation or bolted to transmit torque up to the torque specified.
2. The swivel has API box connections on each end as noted.



Part Number	Safe Working Limit	Safe working limit, compression	Ultimate Load, Tension	Torque	Box Thread, Free end	Box Thread, Fixed end	External Pressure Rating	Net Weight
00508-1110L	110 TON 100 TONNE	58 TON 52.6 TONNE	400 TON 360 TONNE	27,500 Ftlbs 37,285 Nm	4-1/2 IF API	4-1/2 IF API	25 psi 0.172 MPa	420 lb 190 kg

Dimensions and weights subject to change without notice.

Bold linear dimensions in inches, non-bold in millimeters.

The **Ultimate Load** is the tensile loading required to separate the DUB Swivel® into two or more parts.

OPERATING INSTRUCTIONS



**Design &
Manufacturing Ltd.**

SERIES 00508 MAXI DUB-Swivel®, Locking



READ AND UNDERSTAND
THESE INSTRUCTIONS
BEFORE USING
THESE PRODUCTS

OPERATION

1. Thread the swivel onto the reamer and torque to the requirements of the API thread specification.
2. Repeat for opposite box end.
3. If swivel is required to rotate, remove 'Locking sleeve position locking bolts', slide locking sleeve toward the end of the shaft until the locking sleeve bolt hole aligns with the holes on the shaft, and re-fasten bolts. Edge of locking sleeve will rest short of the swivel gap and allow swivel to rotate. When re-installing screws, ensure hole and thread are flushed out and clean to prevent debris from damaging threads.
4. If swivel is required to be in a locked condition, ensure flats between body and seal cover are aligned before proceeding. Remove 'Locking sleeve position locking bolts', slide locking sleeve toward the body of the swivel until the locking sleeve bolt hole aligns with the holes on the shaft, and re-fasten bolts. When re-installing screws, ensure hole and thread are flushed out and clean to prevent debris from damaging threads.

SAFETY

The MAXI DUB-Swivel® is designed to operate only within its specified safe working limit (see *Operating Specifications*). Operation of the MAXI DUB-Swivel® at loads in excess of its **safe working limit** will void the warranty as that may cause permanent bearing damage even though separation due to failure will not occur until the specified **ultimate load** is reached.



Rotating parts can cause death or serious injury! Stay well clear. Do not wear loose clothing.



A swivel is not a universal joint! It is designed to be used under tension and in a straight line. Any use of this product that allows the swivel to fall away from the centerline of rotation will severely affect the life of the swivel.



Make sure that all components of the pulling system are able to withstand the maximum pulling loads. Components not rated for the pull force may break and release the stored energy of the pull. Never use a worn, defective or incomplete component.



Be prepared for the unexpected. Always use recognized safety practices and wear recognized safety equipment.



Replace worn or damaged clevis pins with only DCD parts. The Clevis Pin is designed specifically for this application. It is manufactured and heat treated in a manner to satisfy both design requirements and claimed capacities. Use of any other product as a replacement part will void the warranty and may result in property damage, severe bodily harm, or death to operators or persons nearby. In any instances, the DCD warranty will be voided and DCD will accept no responsibility for product failure or personal injury.



Do not modify or dismantle the MAXI DUB-Swivel®. It has been assembled, and inspected and is only covered by a warranty in its "as shipped" form. Any attempt to dismantle or modify the swivel will result in the warranty becoming void.

OPERATING INSTRUCTIONS

SERVICE



While the machine is still rotating, use a water hose to wash all dirt from the split line groove. Pour oil into the groove and rotate the swivel a couple of turns to protect the mechanical seal from drying out. Failure to do so will allow mud to dry inside the cavity above the seals, which may damage the rubber portion of the seals. Ensure the bolt holes and threads are clean before installing the rotational locking bolts.



Assess the condition of the swivel checking for wear and external damage. Check for axial and radial play in the bearings. Observe mud escaping from the drilling mud relief valve. If a pronounced increase is noticed, the pressure seal will require replacement.



Lubricate the swivel with a **lithium-based grease** containing an extreme pressure (EP) additive (the swivel has been factory lubricated with **Renolit S2TX** grease). Do not mix with calcium or other based greases.

1. Remove the pipe plug covering the grease zerk in the swivel cap.
2. Remove the locking sleeve to access the seal cover.
3. Remove the 2 pipe plugs located on the front face of the seal cover.
4. Use a hand operated grease gun with slow pumping action.
5. Check to make sure relief valve is not plugged. For best results, remove one or both relief valves when adding grease and re-install when greasing is finished.



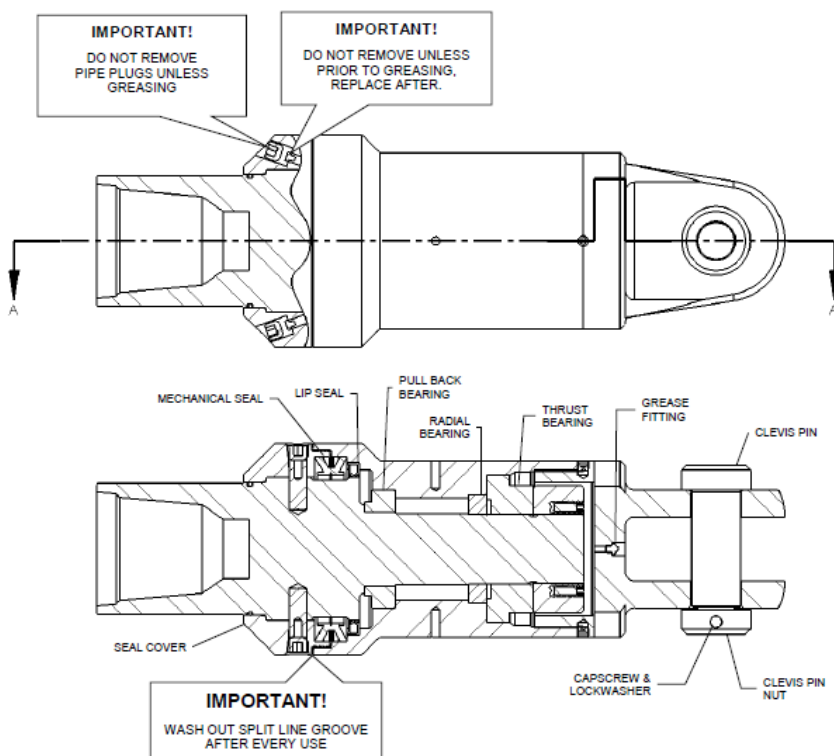
Do not remove the relief valves or replace with an additional grease nipple! Lack of proper lubrication will shorten life of the bearings.



The seals on these swivels may be inspected and replaced in the field by removal of the seal cover. A replacement seal kit is available. Each kit contains a mechanical seal, lip seal, extractor tool, and a set of instructions for removing and replacing the seals. The high pressure seal may be ordered as a separate item.



Factory rebuild services are available for the MAXI DUB-Swivel®. With this service we will replace bearings, seals, and any other worn parts, as well as offer a conditional continuation on our warranty. Assembly of this product is complex and we strongly recommend use of this service. For re-build information call the factory toll free at **1-888-794-8357**.



Product Registration and Warranty Activation



**Design &
Manufacturing Ltd.**

SERIES 00508 MAXI DUB-Swivel[®], Locking Thru-Bore



READ AND UNDERSTAN
THESE INSTRUCTIONS
BEFORE USING
THESE PRODUCTS

Registration and Warranty Activation

Warranty Service – Filling out and returning this form will activate your warranty coverage for the product and will allow for more efficient warranty service in case there is a problem with your product.

Registering your product will allow us to contact you in the unlikely event a safety notification is required.

Product Part Number: _____

Product Serial Number: _____

Purchase Date: _____

Company Name: _____

Company Address: _____

City: _____

State/Province: _____

Zip/Postal Code: _____

Phone (Office): _____

Phone (Cell): _____

Email Address: _____

As an authorized representative of the above listed company, I _____ have read and understood the Operating instructions required for this product.

Signed: _____ Date: _____