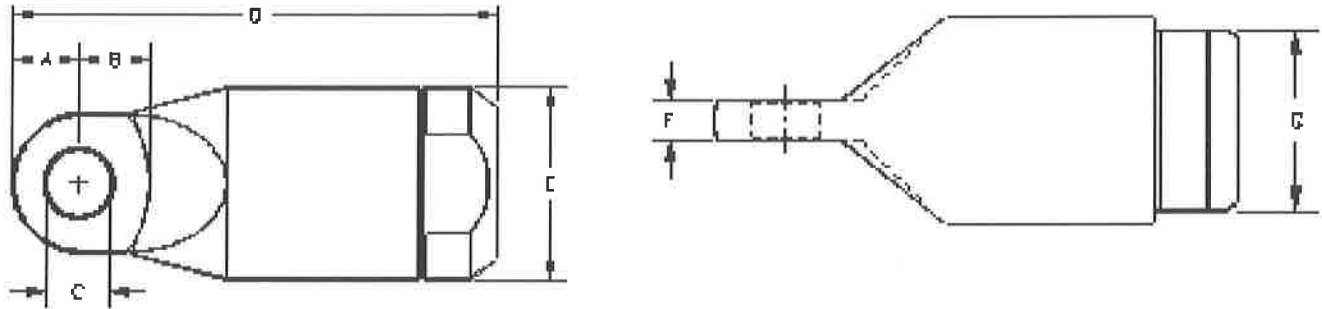


OPERATING SPECIFICATIONS



SERIES 24000 POWER-GRIP™

1. The Power-Grip™ is intended for pulling multi-strand power cable with a minimum of 19 strands.



Part Number	Underground Safe Working Limit	Ultimate Load	Maximum Cable Size	Maximum Core Diameter	Minimum Core Dia.	A	B	C	D	E	F	G	Net Weight
24000-001	3,300 lb 15 kN	10,000 lb 45 kN	1/0 AWG	0.39" 9.9 mm	0.30" 7.6 mm	9/16" 14 mm	9/16" 14 mm	1/2" 13 mm	3-7/8" 98 mm	1-1/4" 32 mm	11/32" 8.7 mm	1-1/8" 29 mm	0.70 lb 0.31 kg
24000-002	3,300 lb 15 kN	10,000 lb 45 kN	2/0 AWG	0.44" 11.1 mm	0.40" 10.2 mm	9/16" 14 mm	9/16" 14 mm	1/2" 13 mm	3-7/8" 98 mm	1-1/4" 32 mm	11/32" 8.7 mm	1-1/8" 29 mm	0.68 lb 0.30 kg
24000-003	3,300 lb 15 kN	10,000 lb 45 kN	3/0 AWG	0.50" 12.7 mm	0.45" 11.5 mm	9/16" 14 mm	9/16" 14 mm	1/2" 13 mm	3-7/8" 98 mm	1-1/4" 32 mm	11/32" 8.7 mm	1-1/8" 29 mm	0.65 lb 0.29 kg
24000-004	3,300 lb 15 kN	10,000 lb 45 kN	4/0 AWG	0.54" 13.7 mm	0.43" 11.0 mm	9/16" 14 mm	9/16" 14 mm	1/2" 13 mm	3-7/8" 98 mm	1-1/4" 32 mm	11/32" 8.7 mm	1-1/8" 29 mm	0.62 lb 0.28 kg
24000-025	3,300 lb 15 kN	10,000 lb 45 kN	250 MCM	0.61" 15.5 mm	0.52" 13.2 mm	9/16" 14 mm	9/16" 14 mm	1/2" 13 mm	3-7/8" 98 mm	1-1/4" 32 mm	11/32" 8.7 mm	1-1/8" 29 mm	0.58 lb 0.26 kg
24000-030	3,300 lb 15 kN	10,000 lb 45 kN	300 MCM	0.62" 15.7 mm	0.57" 14.8 mm	9/16" 14 mm	9/16" 14 mm	1/2" 13 mm	3-7/8" 98 mm	1-1/4" 32 mm	11/32" 8.7 mm	1-1/8" 29 mm	0.58 lb 0.26 kg
24000-035C	4,160 lb 18.5 kN	12,500 lb 55 kN	350 MCM Compact	0.65" 16.5 mm	0.61" 15.5 mm	21/32" 17 mm	11/16" 17mm	5/8" 15.9 mm	4-3/4" 120 mm	1-7/8" 48 mm	3/8" 9.5 mm	1-5/8" 41 mm	1.88 lb 0.85 kg
24000-035	4,160 lb 18.5 kN	12,500 lb 55 kN	350 MCM	0.71" 18.0 mm	0.65" 16.5 mm	21/32" 17 mm	11/16" 17mm	5/8" 15.9 mm	4-3/4" 120 mm	1-7/8" 48 mm	3/8" 9.5 mm	1-5/8" 41 mm	1.84 lb 0.83 kg
24000-050	4,160 lb 18.5 kN	12,500 lb 55 kN	500 MCM	0.81" 20.6 mm	0.73" 18.6 mm	21/32" 17 mm	11/16" 17mm	5/8" 15.9 mm	4-3/4" 120 mm	1-7/8" 48 mm	3/8" 9.5 mm	1-5/8" 41 mm	1.75 lb 0.79 kg
24000-060	4,160 lb 18.5 kN	12,500 lb 55 kN	600 MCM	0.91" 23.1 mm	0.80" 20.4 mm	21/32" 17 mm	11/16" 17mm	5/8" 15.9 mm	4-3/4" 120 mm	1-7/8" 48 mm	3/8" 9.5 mm	1-5/8" 41 mm	1.75 lb 0.79 kg
24000-070	8,000 lb 36 kN	24,000 lb 110 kN	700 MCM	0.97" 24.6 mm	0.91" 23.1 mm	27/32" 21 mm	1" 25 mm	13/16" 20.5 mm	5-5/8" 142 mm	2-1/8" 54 mm	1/2" 13 mm	1-7/8" 48 mm	2.55 lb 1.15 kg
24000-075C	8,000 lb 36 kN	24,000 lb 110 kN	750 MCM Compact	0.94" 23.8 mm	0.91" 23.1 mm	27/32" 21 mm	1" 25 mm	13/16" 20.5 mm	5-5/8" 142 mm	2-1/8" 54 mm	1/2" 13 mm	1-7/8" 48 mm	2.53 lb 1.14 kg
24000-075	8,000 lb 36 kN	24,000 lb 110 kN	750 MCM	1.00" 25.4 mm	0.93" 23.7 mm	27/32" 21 mm	1" 25 mm	13/16" 20.5 mm	5-5/8" 142 mm	2-1/8" 54 mm	1/2" 13 mm	1-7/8" 48 mm	2.51 lb 1.13 kg
24000-100C	8,000 lb 36 kN	24,000 lb 110 kN	500mm ² Compact	1.03" 26.2 mm	1.00" 25.4 mm	27/32" 21 mm	1" 25 mm	13/16" 20.5 mm	5-5/8" 142 mm	2-1/8" 54 mm	1/2" 13 mm	1-7/8" 48 mm	2.40 lb 1.09 kg
24000-100	8,000 lb 36 kN	24,000 lb 110 kN	1000 MCM	1.15" 29.2 mm	1.05" 26.7 mm	27/32" 21 mm	1" 25 mm	13/16" 20.5 mm	5-5/8" 142 mm	2-1/8" 54 mm	1/2" 13 mm	1-7/8" 48 mm	2.30 lb 1.04 kg
24000-125	16,000 lb 71 kN	48,000 lb 214 kN	1250 MCM	1.29" 32.8 mm	1.14" 29.0 mm	1-1/4" 32 mm	1-3/4" 45 mm	1-1/32" 26 mm	7-15/16" 202 mm	2-3/4" 70 mm	3/4" 19 mm	2-1/2" 64 mm	6.37 lb 2.88 kg
24000-150C	16,000 lb 71 kN	48,000 lb 214 kN	800mm ²	1.36" 34.7 mm	1.22" 31.0 mm	1-1/4" 32 mm	1-3/4" 45 mm	1-1/32" 26 mm	7-15/16" 202 mm	2-3/4" 70 mm	3/4" 19 mm	2-1/2" 64 mm	6.06 lb 2.74 kg
24000-150	16,000 lb 71 kN	48,000 lb 214 kN	1500 MCM	1.41" 35.8 mm	1.30" 33.0 mm	1-1/4" 32 mm	1-3/4" 45 mm	1-1/32" 26 mm	7-15/16" 202 mm	2-3/4" 70 mm	3/4" 19 mm	2-1/2" 64 mm	6.06 lb 2.74 kg
24000-175	16,000 lb 71 kN	48,000 lb 214 kN	1750 MCM	1.53" 38.9 mm	1.43" 36.4 mm	1-1/4" 32 mm	1-3/4" 45 mm	1-1/32" 26 mm	7-15/16" 202 mm	2-3/4" 70 mm	3/4" 19 mm	2-1/2" 64 mm	5.84 lb 2.64 kg
24000-200	16,000 lb 71 kN	48,000 lb 214 kN	2000 MCM	1.63" 41.4 mm	1.55" 39.4 mm	1-1/4" 32 mm	1-3/4" 45 mm	1-1/32" 26 mm	7-15/16" 202 mm	2-3/4" 70 mm	3/4" 19 mm	2-1/2" 64 mm	5.53 lb 2.50 kg
24000-237	16,000 lb 71 kN	48,000 lb 214 kN	1200mm ² 2370 MCM	1.68" 42.7 mm	1.59" 40.4 mm	1-1/4" 32 mm	1-3/4" 45 mm	1-1/32" 26 mm	7-15/16" 202 mm	2-3/4" 70 mm	3/4" 19 mm	2-1/2" 64 mm	5.40 lb 2.45 kg

OPERATING SPECIFICATIONS



**Design &
Manufacturing Ltd.**

SERIES 24000 POWER-GRIP™

Part Number	Underground Safe Working Limit	Ultimate Load	Maximum Cable Size	Maximum Core Diameter	Minimum Core Dia	A	B	C	D	E	F	G	Net Weight
24000-200C	16,000 lb 71 kN	48,000 lb 214 kN	45 mm 2500MCM	1.75" 44.5 mm	1.66" 42.2 mm	1-1/4" 32 mm	1-3/4" 45 mm	1-1/32" 26 mm	7-15/16" 202 mm	2-3/4" 70 mm	3/4" 19 mm	2-1/2" 64 mm	5.40 lb 2.45 kg
24000-300	16,000 lb 71 kN	48,000 lb 214 kN	3000 MCM	1.85" 47.0 mm	1.74" 44.2 mm	1-1/4" 32 mm	1-3/4" 45 mm	1-1/32" 26 mm	6-25/32" 172 mm	2-3/4" 70 mm	3/4" 19 mm	2-1/2" 64 mm	4.64 lb 2.11 kg
24000-316	40,000 lb 178 kN	120,000 lb 533 kN	1600mm ²	1.97" 50.0 mm	1.94" 49.3 mm	2-1/8" 54 mm	2-1/8" 54 mm	1-3/4" 44.5 mm	11-11/16" 297 mm	4-1/2" 114 mm	1" 25 mm	4-1/8" 105 mm	25.9 lb 11.7 kg
24000-300C	40,000 lb 178 kN	120,000 lb 533 kN	1800mm ²	2.06" 52.4 mm	1.97" 50.0 mm	2-1/8" 54 mm	2-1/8" 54 mm	1-3/4" 44.5 mm	11-11/16" 297 mm	4-1/2" 114 mm	1" 25 mm	4-1/8" 105 mm	25.8 lb 11.7 kg
24000-501	40,000 lb 178 kN	120,000 lb 533 kN	2010mm ² (compact)	2.12" 54.1 mm	2.06" 52.4 mm	2-1/8" 54 mm	2-1/8" 54 mm	1-3/4" 44.5 mm	11-11/16" 297 mm	4-1/2" 114 mm	1" 25 mm	4-1/8" 105 mm	23.7 lb 10.8 kg
24000-395	40,000 lb 178 kN	120,000 lb 533 kN	2000mm ²	2.25" 57.2 mm	2.16" 54.9 mm	2-1/8" 54 mm	2-1/8" 54 mm	1-3/4" 44.5 mm	11-11/16" 297 mm	4-1/2" 114 mm	1" 25 mm	4-1/8" 105 mm	23.7 lb 10.8 kg
24000-400	40,000 lb 178 kN	120,000 lb 533 kN	4000 MCM	2.41" 61.2 mm	2.26" 57.4 mm	2-1/8" 54 mm	2-1/8" 54 mm	1-3/4" 44.5 mm	11-11/16" 297 mm	4-1/2" 114 mm	1" 25 mm	4-1/8" 105 mm	23.7 lb 10.8 kg
24000-500	40,000 lb 178 kN	120,000 lb 533 kN	5000 MCM	2.52" 64.0 mm	2.37" 60.2 mm	2-1/8" 54 mm	2-1/8" 54 mm	1-3/4" 44.5 mm	11-11/16" 297 mm	4-1/2" 114 mm	1" 25 mm	4-1/8" 105 mm	23.7 lb 10.8 kg

Dimensions and weights subject to change without notice.

The **Underground Safe Working Limit** is calculated using a 3:1 safety factor based on the ultimate load. The maximum load recommended by the cable manufacturer will be lower. The **Ultimate Load** is the tensile load required to separate the Power Grip™ into two or more parts.

OPERATING INSTRUCTIONS

DCD

Design & Manufacturing Ltd.

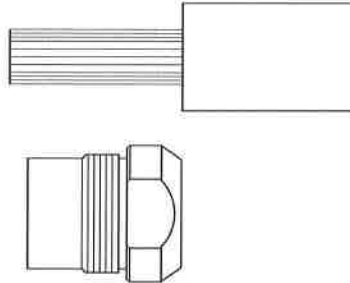
SERIES 24000 POWER-GRIP™



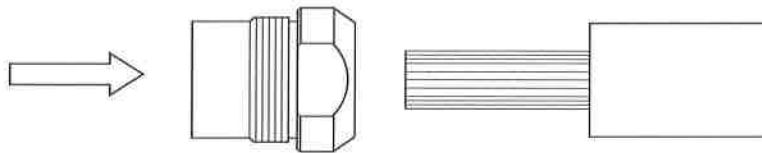
READ AND UNDERSTAND
THESE INSTRUCTIONS
BEFORE USING
THESE PRODUCTS

INSTALLATION

1. Cut back the cable jacket and insulation a length equivalent to slightly longer than length of the threaded cone nut.



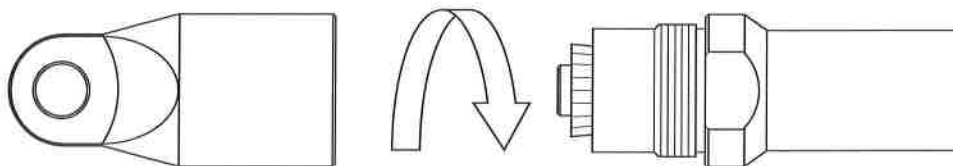
2. Slip the threaded cone nut over the exposed conductors.



3. Press the tapered insert into the center of the conductors and tap into place using a hammer. Use a hex wrench to turn the tapered insert until it will advance no further into the conductor core.



4. Screw the Power-Grip™ body onto the threaded cone nut and cable assembly. Tighten the nut to the body using wrenches on the flats provided.



5. To remove the grip after use, unscrew the nut from the Power-Grip™ body. Unscrew the tapered insert from the conductor core and remove the insert. Remove the cone nut from the cable.

6. After use, the end of the cable should be cut back at least six inches to remove any portion of the cable that was damaged by the grip.

OPERATING INSTRUCTIONS

DCD

Design & Manufacturing Ltd.

SAFETY



1. The Power-Grip™ is designed to operate only within its specified **safe working limit** (see *Operating Specifications*). Operation of the Power-Grip™ at loads in excess of its **safe working limit** will void the warranty even though separation due to failure will not occur until the specified **ultimate load** is reached.
2. For underground use, the recommended safe working limit is 3:1 based on the ultimate load. For overhead use, the required safe working limit is 5:1 based on the ultimate load due to the higher risk of severe personal injury or property damage.
3. Never use a worn, defective or incomplete component. Ensure that all components of the pulling system are able to withstand the maximum pulling loads. Components not rated for the pull force may break and release the stored energy of the pull.
4. Any attempt to modify the Power-Grip™ will void the warranty and may result in property damage, severe bodily harm, or death.
5. Be prepared for the unexpected. Use recognized safety practices and wear recognized safety equipment.

SERVICE



1. After each use, assess the condition of the Power-Grip™ checking for wear and external damage.
2. Replacement parts are available upon request.