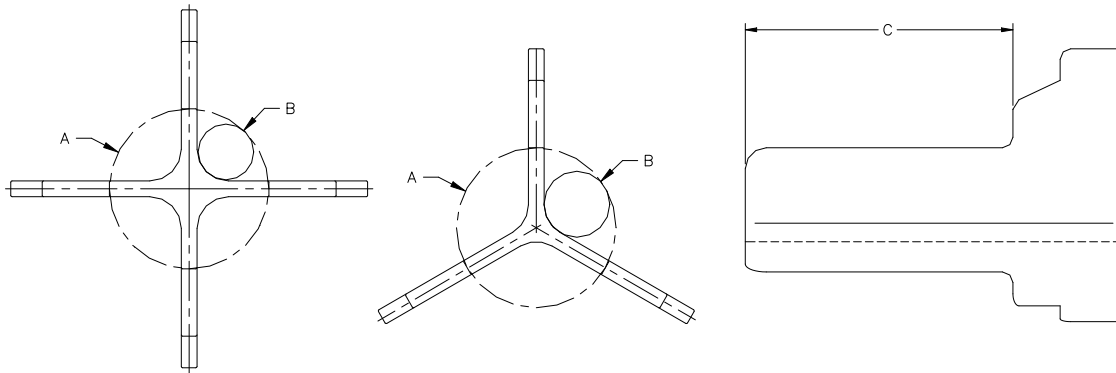


# OPERATING SPECIFICATIONS



## SERIES 32650 / 32655 CABLE SEPARATORS

1. Place a separator immediately before the conduit entrance or at the opening of a Flexible Cable Guide. This ensures the cables enter in a fixed configuration (typically a triangular or square pattern) rather than a random bundle.
2. Cable Separators are manufactured from polyurethane plastic.



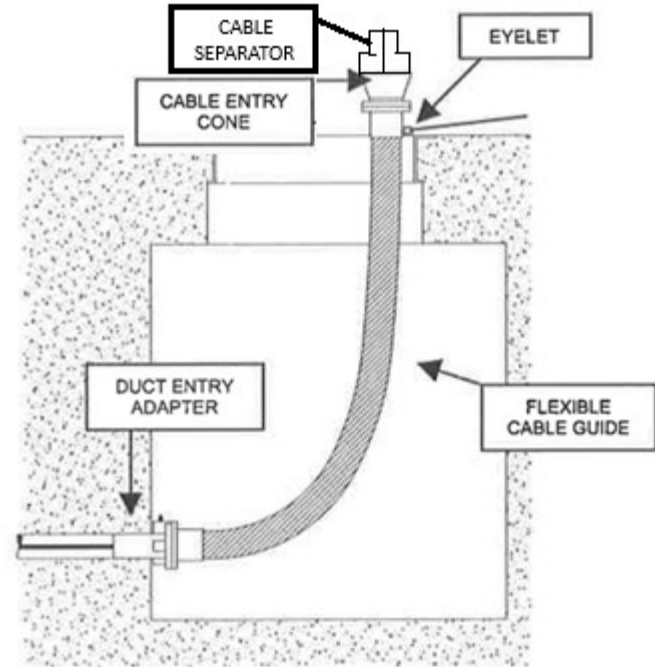
Part Number	Nominal Duct Size	Style	Color	A	Corresponding Duct for dim. A	B	Corresponding Typ. cable	C	Net Weight
32650-200	2"	3-Way	Black	1-15/16" 49 mm	2" sched. 80	0.72" 18.3 mm	#4/0 AWG	4" 102 mm	0.3 lb 0.14 kg
32650-400	4"	3-Way	Red	3-13/16" 97 mm	4" sched. 80	1.30" 33.0 mm	750 kcmil	6-3/8" 162 mm	1.0 lb 0.5 kg
32650-500	5"	3-Way	Red	5-1/32" 128 mm	5" sched. 40	1.65" 41.9 mm	1250 kcmil	7-1/8" 181 mm	1.4 lb 0.6 kg
32650-600	6"	3-Way	Red	5-3/4" 146 mm	6" sched. 80	2.15" 54.6 mm	2000 kcmil	7-1/8" 181 mm	1.5 lb 0.7 kg
32655-400	4"	4-Way	Black	3-13/16" 97 mm	4" sched. 80	1.30" 33.0 mm	750 kcmil	6-3/8" 162 mm	1.5 lb 0.7 kg
32655-500	5"	4-Way	Black	5-1/32" 128 mm	5" sched. 40	1.65" 41.9 mm	1250 kcmil	7-1/8" 181 mm	2.0 lb 0.9 kg
32655-600	6"	4-Way	Black	5-3/4" 146 mm	6" sched. 80	1.79" 45.5 mm	1250 kcmil	7-1/8" 181 mm	2.0 lb 0.9 kg

A: Minimum duct diameter  
B: Typical cable diameter to fit A

Dimensions and weights subject to change without notice.

# INSTALLATION

1. Select the duct entry adapter (series 32620) to suit the duct size and attach to one end of flexible cable guide.
2. Attach additional cable guides as required to reach top of manhole.
3. Attach cable entry cone (series 32610) to end of flexible cable guide.
4. Install the cable separator (32650/32655 series) to the top of the cable entry cone.
5. Secure flexible cable guide using ropes and eyelet provided.
6. Additional lubrication can be applied to the cable before it enters the cable separator.



- The separator should work in tandem with a staggered Wire Rope Bridle Sling (23125/23250/23500 series). Rather than having all four cables arrive at the same point, the Wire Rope Bridle Sling will stagger the pulling eyes and cables. This creates a tapered profile that navigates bends much more easily than a blunt, square block of four cables.
- Always use a swivel between the pulling rope and the Bridle Sling to prevent the rope's natural twist from being transferred to your cable bundle.

# SAFETY



1. Never use a worn, defective or incomplete component. Ensure that all components of the pulling systems are able to withstand the maximum pulling loads. Components not rated for the pull force may break and release the stored energy of the pull.
2. Be prepared for the unexpected. Use recognized safety practices and wear recognized safety equipment.

# SERVICE



There are no replacement parts available for this product.